



Č.j. OÚ-ZA-OOP4-2020/050429/SCH

V Žiline 15.12.2020

## Rozhodnutie

Okresný úrad Žilina, odbor opravných prostriedkov, referát lesného hospodárstva (ďalej len OÚ) ako príslušný orgán podľa § 59 ods. 2 písm. i) zákona č. 326/2005 Z.z. o lesoch v znení neskorších predpisov ( ďalej len zákon o lesoch ) v súlade s § 46 zákona č. 71/1967 Zb. o správnom konaní v znení neskorších predpisov

### I. určuje

podľa ustanovenia § 39 ods. 3 zákona o lesoch

#### lesný celok Kláštor.

Lesný celok tvoria pozemky nachádzajúce sa v obvode hraníc lesného celku. Obvodová hranica lesného celku je tvorená týmito čiastkovými líniami – spoločnými hranicami lesných celkov :

1. lesný celok Kláštor ↔ lesný celok Kýčera
2. lesný celok Kláštor ↔ lesný celok Blatnica
3. lesný celok Kláštor ↔ lesný celok Turčianske Teplice
4. lesný celok Kláštor ↔ lesný celok Rudno
5. lesný celok Kláštor ↔ lesný celok Nitrianske Pravno
6. lesný celok Kláštor ↔ lesný celok Rajcko

Súčasťou výrokovej časti rozhodnutia sú súradnice lomových bodov čiastkových línii tvoriacich obvodovú hranicu lesného celku, ktoré sú uvedené v prílohe tohto rozhodnutia.

### Odôvodnenie

Lesný celok (LC) bol určený z podnetu Okresného úradu Žilina. Konajúci orgán štátnej správy pri jeho určovaní zohľadnil plošný rozsah lesných pozemkov, spôsob ich užívania a polohu v príslušnom lesnom hospodárskom celku.

Lesný celok sa nachádza v okrese Martin a Turčianske Teplice a do lesného celku patria celé katastrálne územia : Polerieka, Ondrašová, Moškovec, Kláštor pod Znievom, Vrčko, Turčiansky Ďur ( v čase určenia lesného celku bez lesných pozemkov) a časti katastrálnych území: Lazany a Blažovce ( v čase určenia lesného celku bez lesných pozemkov).

Lesný celok vymedzuje územie v rámci ktorého sa pre lesné pozemky vedené v registri CKN príslušného katastrálneho územia vyhotoví program starostlivosti o lesy.

Orientačná výmera lesných pozemkov v lesnom celku je 5290.7007 ha.

Vektorový súbor formát .shp obsahujúci línie obvodovej hranice lesného celku je k dispozícii na Okresnom úrade Žilina, odbore opravných prostriedkov.

## Poučenie:

Proti tomuto rozhodnutiu sa možno odvolať v lehote 15 dní od dňa doručenia tohto rozhodnutia na Okresný úrad Žilina, odbor opravných prostriedkov, ul. Vysokoškolákov 8556/33B, 010 08 Žilina. Odvolanie nemá odkladný účinok.

Toto rozhodnutie je preskúmateľné súdom po vyčerpaní riadneho opravného prostriedku a po nadobudnutí jeho právoplatnosti.



JUDr. Adriána Bérešová  
vedúca odboru

## Rozdeľovník:

Doručuje sa verejnou vyhláškou v zmysle § 67 ods.2 zákona o lesoch týmto účastníkom konania o určení lesného celku Kláštor:

Obhospodarovateľom lesných pozemkov podľa evidencie OÚ Martin, pozemkového a lesného odboru:

1. Central Agro Forest Finance s.r.o., IČO: 43884164, Rybníky 331, 038 43 Kláštor pod Znievom
2. DREWROS s.r.o., IČO: 36435856, P. Mudroňa 43, 036 01 Martin
3. Hanzel Ján, Ondrašová 23, 038 22 Ondrašová
4. LESY SR š.p. OZ Žilina, IČO: 36038351, Nám. M.R. Štefánika 1, 011 45 Žilina
5. Mašek Juraj, Tulsá 2461/21, 960 01 Zvolen
6. Mestský urbársky spolok pozemkové spoločenstvo Kláštor pod Znievom, IČO: 17066646, A. Moyzesa 45, 038 43 Kláštor pod Znievom
7. Pozemkové spoločenstvo urbarialistov Moškovec, IČO: 42389399, Moškovec 14, 038 44 Moškovec
8. Pyšný Ján, Severná 266/10, 038 43 Kláštor pod Znievom
9. SHP a.s., IČO: 31585370, Červenej armády 1191, 039 01 Turčianske Teplice
10. Staňo Adam, Ondrašová 7, 038 22 Ondrašová
11. STAVEKO-SK, a.s., IČO: 43900542, K cintorínu 561/45, 010 04 Žilina
12. Urbár Ondrašová pozem. spol., IČO: 42350875, Ondrašová 25, 038 22 Ondrašová

Správcomi lesného majetku štátu a zástupcami neznámych vlastníkov lesných pozemkov, okrem pozemkov vedených ako spoločná nehnuteľnosť :

13. LESY SR š.p. OZ Žilina, IČO: 36038351, Nám. M.R. Štefánika 1, 011 45 Žilina

Vlastníkmi lesných pozemkov :

14. vlastníci lesných pozemkov v k.ú Polerieka,
15. vlastníci lesných pozemkov v k.ú Ondrašová,
16. vlastníci lesných pozemkov v k.ú Moškovec,
17. vlastníci lesných pozemkov v k.ú Vrícko,
18. vlastníci lesných pozemkov v k.ú Kláštor pod Znievom,
19. vlastníci lesných pozemkov v k.ú Turčiansky Ďur,
20. vlastníci lesných pozemkov patriacich do lesného celku v k.ú: Lazany
21. vlastníci lesných pozemkov patriacich do lesného celku v k.ú: Blažovce

Správcomi podielov štátu a zástupcami neznámych vlastníkov lesných pozemkov tvoriacich spoločnú nehnuteľnosť :

22. SPF, Búdková 3555/36, 811 04 Bratislava

Za účelom zverejnenia :

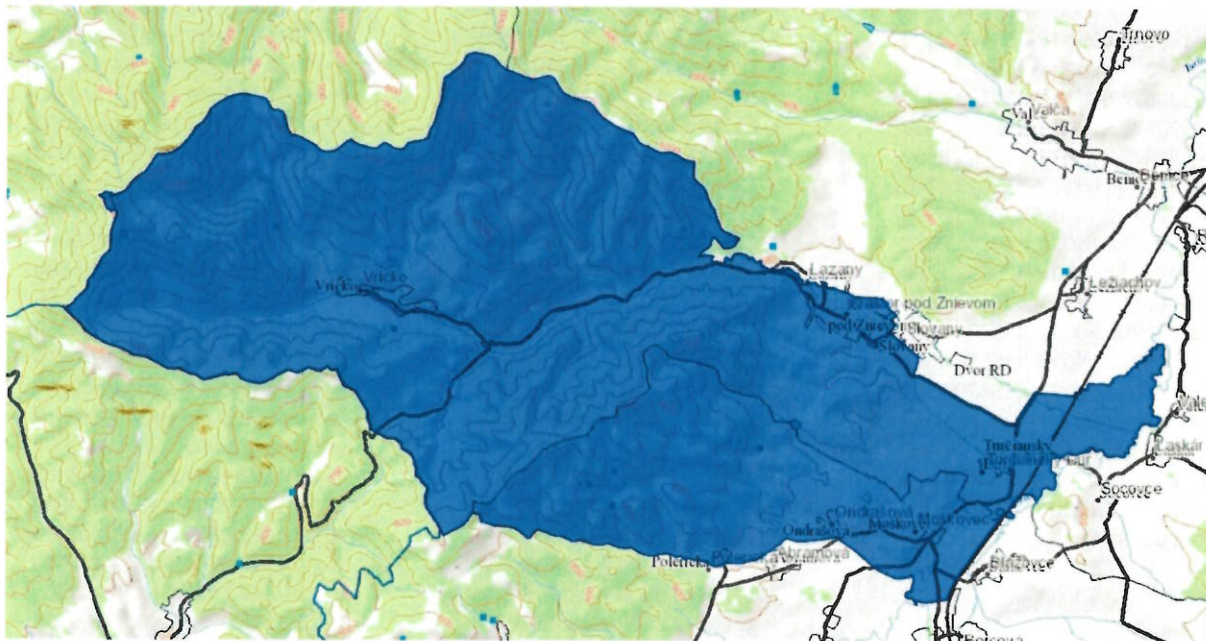
1. OcÚ. Kláštor pod Znievom, M.Čulena 181, 038 43 Kláštor pod Znievom ( k.ú. Lazany, Kláštor p Znievom)
2. OcÚ. Vrícko, Vrícko 136, 038 31 Vrícko
3. OcÚ. Blažovce, Blažovce 22, 038 44 Blažovce
4. OcÚ. Moškovec, 20, 038 45 Moškovec
5. OcÚ. Ondrašová, 25, 038 22 Ondrašová

6. OcÚ. Abramová, 8, 038 22 Abramová (k.ú. Polerieka)
7. OcÚ. Turčiansky Ďur, Turčiansky Ďur 6, 038 43 Kláštor pod Znievom
8. Okresný úrad Martin pozemkový a lesný odbor, P. Mudroňa 45, 036 01 Martin
9. <https://www.minv.sk>

Na vedomie :

1. NLC – ústav HÚL, Sokolská 2, 960 52 Zvolen
2. NLC – ÚLZI, Sokolská 2, 960 52 Zvolen
3. Lesy SR š.p. Banská Bystrica odbor lesníckej politiky a certifikácie lesov, Ing. Peter Zima, Námestie SNP 8, 975 66 Banská Bystrica

Orientačné zobrazenie obvodovej hranice lesného celku Kláštor :





Príloha : súradnice lomových bodov línií tvoriacich hranicu lesného celku  
(súradnicový systém : mínus JTSK \*súradnica X\*súradnica Y) :

spoločná hranica lesný celok Kláštor ↔ lesný celok Kýčera, 531 bodov

X-1200705.0416 Y-435562.7139,	X-1200994.4500 Y-435855.6500,	X-1201331.1000 Y-436300.5000,
X-1200714.5000 Y-435565.0000,	X-1201004.8000 Y-435859.9000,	X-1201336.5000 Y-436302.0000,
X-1200716.2500 Y-435562.6500,	X-1201012.7000 Y-435854.8000,	X-1201340.0000 Y-436313.0000,
X-1200722.0500 Y-435565.6000,	X-1201011.8000 Y-435866.8000,	X-1201371.7000 Y-436345.0000,
X-1200732.2000 Y-435562.5500,	X-1201011.8000 Y-435882.4000,	X-1201357.0000 Y-436400.5000,
X-1200732.5000 Y-435577.5000,	X-1201019.6000 Y-435890.2000,	X-1201347.7000 Y-436449.2000,
X-1200741.7000 Y-435574.0000,	X-1201032.1000 Y-435890.2000,	X-1201354.0000 Y-436473.4000,
X-1200749.5500 Y-435581.6500,	X-1201042.3500 Y-435899.3000,	X-1201357.4000 Y-436535.0000,
X-1200753.0000 Y-435568.1500,	X-1201047.1000 Y-435893.6000,	X-1201355.3000 Y-436567.8000,
X-1200762.4000 Y-435567.7500,	X-1201046.3000 Y-435877.2000,	X-1201344.6000 Y-436666.0000,
X-1200767.3500 Y-435570.4000,	X-1201062.0000 Y-435875.3000,	X-1201442.2000 Y-436696.3000,
X-1200772.9500 Y-435582.5500,	X-1201068.1500 Y-435883.9500,	X-1201430.7000 Y-436761.4000,
X-1200768.0500 Y-435588.1000,	X-1201067.1500 Y-435896.8500,	X-1201428.4000 Y-436774.7000,
X-1200772.7000 Y-435598.3000,	X-1201075.8500 Y-435917.4000,	X-1201496.7000 Y-436809.2000,
X-1200761.1000 Y-435604.8500,	X-1201072.7500 Y-435938.6000,	X-1201495.0000 Y-436841.0000,
X-1200765.4000 Y-435613.2000,	X-1201072.6600 Y-435939.2200,	X-1201492.1600 Y-436846.4200,
X-1200756.3500 Y-435623.6500,	X-1201086.8500 Y-435949.6500,	X-1201497.7700 Y-436849.8100,
X-1200772.1500 Y-435641.0000,	X-1201088.3700 Y-435950.8300,	X-1201498.0000 Y-436849.8000,
X-1200781.0000 Y-435639.1500,	X-1201100.4000 Y-435957.5500,	X-1201497.0800 Y-436861.5200,
X-1200796.3500 Y-435633.8000,	X-1201121.6500 Y-435977.1000,	X-1201496.8000 Y-436866.3000,
X-1200796.9000 Y-435634.8000,	X-1201129.4500 Y-435975.7500,	X-1201496.1800 Y-436876.7900,
X-1200798.3500 Y-435650.4000,	X-1201135.4000 Y-435978.6500,	X-1201496.0000 Y-436881.0000,
X-1200804.5500 Y-435679.2500,	X-1201142.3000 Y-435985.1000,	X-1201546.7000 Y-436909.0000,
X-1200822.6000 Y-435681.3500,	X-1201147.1500 Y-435995.2200,	X-1201540.3000 Y-437007.6000,
X-1200820.6500 Y-435672.6500,	X-1201150.6000 Y-436002.4500,	X-1201533.5000 Y-437082.0000,
X-1200821.3500 Y-435666.5000,	X-1201154.0500 Y-436005.8000,	X-1201532.4000 Y-437102.0000,
X-1200828.1500 Y-435666.6000,	X-1201153.3000 Y-436013.9500,	X-1201521.0000 Y-437219.7000,
X-1200839.6000 Y-435665.1000,	X-1201158.7500 Y-436016.2000,	X-1201515.0000 Y-437320.0000,
X-1200857.0000 Y-435650.2000,	X-1201177.2500 Y-436018.4000,	X-1201512.8000 Y-437360.7000,
X-1200878.2000 Y-435657.1500,	X-1201179.0000 Y-436023.0000,	X-1201507.4600 Y-437513.3300,
X-1200886.0500 Y-435666.9500,	X-1201177.1600 Y-436031.5200,	X-1201504.0900 Y-437525.8600,
X-1200883.4000 Y-435678.7500,	X-1201179.0500 Y-436044.5000,	X-1201498.2000 Y-437529.0000,
X-1200870.0000 Y-435683.7000,	X-1201188.6500 Y-436040.4500,	X-1201512.8400 Y-437536.7600,
X-1200870.5000 Y-435692.0500,	X-1201200.1500 Y-436036.5000,	X-1201508.1300 Y-437542.1800,
X-1200882.2000 Y-435689.9500,	X-1201202.9300 Y-436044.0300,	X-1201505.4300 Y-437545.2700,
X-1200885.6500 Y-435692.0000,	X-1201210.0000 Y-436070.2000,	X-1201564.4400 Y-437586.5700,
X-1200887.5000 Y-435701.3000,	X-1201214.2500 Y-436067.9000,	X-1201570.5800 Y-437591.6000,
X-1200883.8500 Y-435707.4000,	X-1201215.0000 Y-436069.0000,	X-1201574.6400 Y-437593.9100,
X-1200896.6000 Y-435725.3000,	X-1201221.6000 Y-436080.0000,	X-1201578.0000 Y-437597.7000,
X-1200894.0500 Y-435729.7000,	X-1201216.7000 Y-436097.8000,	X-1201690.8000 Y-437671.0000,
X-1200900.7000 Y-435739.9000,	X-1201217.0000 Y-436109.7000,	X-1201830.8000 Y-437763.7900,
X-1200912.3500 Y-435734.0000,	X-1201215.0000 Y-436129.3000,	X-1201837.0700 Y-437767.9400,
X-1200918.8500 Y-435735.2500,	X-1201215.3000 Y-436134.4000,	X-1201912.0000 Y-437817.6000,
X-1200923.6500 Y-435741.2000,	X-1201213.8000 Y-436147.6000,	X-1201926.5000 Y-437825.5000,
X-1200914.1000 Y-435754.5000,	X-1201217.3000 Y-436176.0000,	X-1201942.8000 Y-437831.2000,
X-1200921.9000 Y-435773.1500,	X-1201225.2000 Y-436181.0000,	X-1201970.0000 Y-437838.7000,
X-1200939.5500 Y-435766.0500,	X-1201229.1000 Y-436192.2000,	X-1201993.4000 Y-437845.3000,
X-1200944.6000 Y-435751.9000,	X-1201238.0000 Y-436207.3000,	X-1201998.1000 Y-437856.6000,
X-1200950.3000 Y-435749.6500,	X-1201242.4000 Y-436212.9000,	X-1201996.3000 Y-437907.4000,
X-1200951.0000 Y-435756.0000,	X-1201247.0000 Y-436230.3000,	X-1201994.0000 Y-437939.3000,
X-1200977.3000 Y-435779.9500,	X-1201250.6000 Y-436234.6000,	X-1201988.4000 Y-437985.0000,
X-1200978.2000 Y-435784.2000,	X-1201255.5000 Y-436247.0000,	X-1201978.5000 Y-438015.4000,
X-1200968.6500 Y-435796.1000,	X-1201254.6000 Y-436252.0000,	X-1201957.3000 Y-438058.2000,
X-1200973.1500 Y-435803.0000,	X-1201258.7000 Y-436259.0000,	X-1201936.5000 Y-438094.3000,
X-1200984.9000 Y-435813.3000,	X-1201263.2000 Y-436262.7000,	X-1201882.2000 Y-438188.0000,
X-1200993.4000 Y-435815.2500,	X-1201268.0000 Y-436269.2000,	X-1201829.5000 Y-438273.5000,
X-1200995.7000 Y-435821.6500,	X-1201272.6000 Y-436269.7000,	X-1201779.2000 Y-438358.4000,
X-1200984.3500 Y-435829.5000,	X-1201294.7000 Y-436274.5000,	X-1201729.6000 Y-438446.0000,
X-1200981.5000 Y-435842.8000,	X-1201305.3000 Y-436279.0000,	X-1201718.0000 Y-438478.0000,

X-1201703.0000 Y-438544.0000,  
X-1201690.8000 Y-438594.6000,  
X-1201684.2000 Y-438615.8000,  
X-1201681.0000 Y-438622.0000,  
X-1201666.0000 Y-438646.1000,  
X-1201619.3000 Y-438725.0000,  
X-1201570.6000 Y-438803.6000,  
X-1201515.7000 Y-438898.5000,  
X-1201470.8000 Y-438974.6000,  
X-1201446.6300 Y-439015.3600,  
X-1201440.6700 Y-439025.4100,  
X-1201416.0000 Y-439067.0000,  
X-1201368.6000 Y-439148.0000,  
X-1201320.7000 Y-439240.4000,  
X-1201279.4000 Y-439320.6000,  
X-1201267.9600 Y-439345.7400,  
X-1201262.7200 Y-439357.2500,  
X-1201233.8000 Y-439420.8000,  
X-1201224.4000 Y-439457.4000,  
X-1201223.4600 Y-439463.9600,  
X-1201215.5000 Y-439519.7000,  
X-1201206.6000 Y-439522.0000,  
X-1201181.2000 Y-439510.0000,  
X-1201168.8000 Y-439503.8700,  
X-1201166.1100 Y-439502.5400,  
X-1201128.6000 Y-439484.0000,  
X-1201094.3000 Y-439471.5000,  
X-1201029.7000 Y-439455.3000,  
X-1200932.6400 Y-439426.2700,  
X-1200924.8400 Y-439435.7200,  
X-1200883.6900 Y-439485.9700,  
X-1200787.1700 Y-439602.4100,  
X-1200741.5800 Y-439657.5800,  
X-1200646.0700 Y-439772.8700,  
X-1200616.9600 Y-439808.0100,  
X-1200547.6700 Y-439892.0600,  
X-1200544.8500 Y-439895.3900,  
X-1200540.3400 Y-439900.7200,  
X-1200538.1600 Y-439903.2900,  
X-1200537.1900 Y-439903.0900,  
X-1200543.3800 Y-439913.9300,  
X-1200549.3600 Y-439925.4600,  
X-1200554.8100 Y-439936.6100,  
X-1200539.5800 Y-439949.9300,  
X-1200530.7000 Y-439937.0800,  
X-1200523.5800 Y-439926.4200,  
X-1200516.5200 Y-439916.1500,  
X-1200510.1900 Y-439906.3000,  
X-1200503.9400 Y-439896.3900,  
X-1200490.7300 Y-439876.3600,  
X-1200485.6900 Y-439868.7200,  
X-1200476.3800 Y-439857.5500,  
X-1200465.8900 Y-439844.9600,  
X-1200460.4200 Y-439841.7900,  
X-1200442.8800 Y-439831.6200,  
X-1200432.5000 Y-439825.6000,  
X-1200427.3400 Y-439817.2200,  
X-1200421.7200 Y-439808.1100,  
X-1200327.9900 Y-439879.0800,  
X-1200274.0400 Y-439805.7900,  
X-1200271.4000 Y-439802.2000,  
X-1200247.6800 Y-439815.5200,  
X-1200242.6000 Y-439818.3700,

X-1200209.2300 Y-439841.4200,  
X-1200205.8000 Y-439847.6000,  
X-1200194.2900 Y-439864.8400,  
X-1200183.9300 Y-439879.5700,  
X-1200177.3000 Y-439889.0000,  
X-1200169.8700 Y-439898.2700,  
X-1200165.2000 Y-439904.1000,  
X-1200158.0100 Y-439909.9200,  
X-1200154.7000 Y-439912.6000,  
X-1200139.9200 Y-439923.2000,  
X-1200125.6600 Y-439933.4300,  
X-1200119.3000 Y-439938.0000,  
X-1200093.2900 Y-439952.4900,  
X-1200091.5000 Y-439951.4000,  
X-1200063.0000 Y-439931.7000,  
X-1200054.4000 Y-439947.0000,  
X-1200047.5000 Y-439962.4000,  
X-1199999.0000 Y-440066.0000,  
X-1199993.0800 Y-440100.0000,  
X-1199991.2000 Y-440099.6000,  
X-1199986.8000 Y-440098.9500,  
X-1199982.5000 Y-440128.5500,  
X-1199972.2000 Y-440157.8000,  
X-1199982.7000 Y-440182.0000,  
X-1199982.1000 Y-440234.2500,  
X-1199976.5500 Y-440268.4000,  
X-1199974.4000 Y-440294.2000,  
X-1199976.9500 Y-440357.0000,  
X-1199967.8300 Y-440448.6700,  
X-1199957.4400 Y-440490.0200,  
X-1199938.1400 Y-440521.4800,  
X-1199936.4745 Y-440521.1202,  
X-1199896.5955 Y-440584.0543,  
X-1199889.7652 Y-440611.3756,  
X-1199876.8926 Y-440658.3997,  
X-1199870.5877 Y-440675.6069,  
X-1199864.2828 Y-440717.6397,  
X-1199846.1562 Y-440758.2276,  
X-1199834.8598 Y-440774.5153,  
X-1199819.3603 Y-440812.8702,  
X-1199819.3603 Y-440822.9843,  
X-1199819.8857 Y-440863.4408,  
X-1199821.7246 Y-440884.7199,  
X-1199821.9873 Y-440902.5839,  
X-1199825.4025 Y-440914.6683,  
X-1199820.9365 Y-440917.0326,  
X-1199815.2632 Y-440917.8446,  
X-1199768.1735 Y-440924.5840,  
X-1199733.2400 Y-440936.9900,  
X-1199735.2900 Y-440964.5100,  
X-1199738.8000 Y-440983.5300,  
X-1199740.9100 Y-440983.1600,  
X-1199743.3300 Y-440982.5300,  
X-1199754.1900 Y-440981.2700,  
X-1199769.2100 Y-440976.4500,  
X-1199780.6000 Y-440974.8200,  
X-1199780.6100 Y-440982.0700,  
X-1199780.6100 Y-440983.6400,  
X-1199783.1544 Y-440989.3891,  
X-1199788.4700 Y-441001.4000,  
X-1199789.7500 Y-441012.6500,  
X-1199788.5878 Y-441021.3456,  
X-1199786.9334 Y-441033.7239,

X-1199786.4300 Y-441037.4900,  
X-1199786.7400 Y-441057.6800,  
X-1199783.5200 Y-441065.4600,  
X-1199783.8600 Y-441067.0800,  
X-1199780.9800 Y-441070.9200,  
X-1199778.5000 Y-441072.3900,  
X-1199770.1200 Y-441075.8600,  
X-1199753.7300 Y-441084.1300,  
X-1199741.8500 Y-441094.6200,  
X-1199735.6900 Y-441108.4200,  
X-1199734.8300 Y-441120.7000,  
X-1199737.7982 Y-441131.5514,  
X-1199738.8400 Y-441135.3600,  
X-1199741.2400 Y-441150.3500,  
X-1199741.7800 Y-441154.8500,  
X-1199742.3200 Y-441159.9300,  
X-1199742.6500 Y-441169.3900,  
X-1199742.1700 Y-441179.7400,  
X-1199742.2275 Y-441181.8914,  
X-1199742.5500 Y-441193.9600,  
X-1199737.0400 Y-441208.0100,  
X-1199734.4400 Y-441215.5900,  
X-1199732.1700 Y-441219.9400,  
X-1199731.3700 Y-441226.9200,  
X-1199737.3500 Y-441238.1600,  
X-1199751.3100 Y-441256.1300,  
X-1199758.5300 Y-441261.6600,  
X-1199766.0000 Y-441267.6400,  
X-1199764.5000 Y-441276.1700,  
X-1199765.3600 Y-441282.4400,  
X-1199763.5100 Y-441289.0500,  
X-1199760.6600 Y-441303.4900,  
X-1199757.5900 Y-441313.1400,  
X-1199755.0300 Y-441322.2200,  
X-1199707.0900 Y-441305.9300,  
X-1199703.5000 Y-441313.5800,  
X-1199702.3500 Y-441316.0000,  
X-1199697.0700 Y-441325.6100,  
X-1199696.9100 Y-441329.3500,  
X-1199689.1000 Y-441340.1600,  
X-1199684.3800 Y-441348.7900,  
X-1199673.3600 Y-441355.7500,  
X-1199642.7600 Y-441366.8700,  
X-1199641.9400 Y-441382.9500,  
X-1199623.8500 Y-441381.5600,  
X-1199616.9300 Y-441386.9500,  
X-1199601.6800 Y-441378.5400,  
X-1199599.2900 Y-441383.4200,  
X-1199596.2800 Y-441389.5800,  
X-1199591.8400 Y-441398.6700,  
X-1199590.9100 Y-441402.6800,  
X-1199588.4700 Y-441413.1700,  
X-1199587.2200 Y-441418.6100,  
X-1199573.8000 Y-441463.9100,  
X-1199561.5200 Y-441465.9400,  
X-1199558.5600 Y-441466.2200,  
X-1199552.7400 Y-441466.7200,  
X-1199545.1000 Y-441471.5800,  
X-1199536.4400 Y-441490.7400,  
X-1199532.6800 Y-441504.6900,  
X-1199532.0600 Y-441506.9700,  
X-1199526.4900 Y-441512.8000,  
X-1199518.5000 Y-441521.1500,

X-1199507.1600 Y-441533.0300,  
X-1199505.3000 Y-441538.7100,  
X-1199501.8100 Y-441549.3800,  
X-1199501.4800 Y-441563.8100,  
X-1199502.3700 Y-441564.2700,  
X-1199535.4245 Y-441573.2271,  
X-1199520.5365 Y-441610.7334,  
X-1199510.8020 Y-441611.3060,  
X-1199504.5032 Y-441611.8786,  
X-1199499.6360 Y-441632.2065,  
X-1199505.3622 Y-441637.3600,  
X-1199527.1216 Y-441644.8040,  
X-1199534.2793 Y-441645.0903,  
X-1199538.2876 Y-441673.4348,  
X-1199522.2543 Y-441694.0490,  
X-1199542.2959 Y-441724.2544,  
X-1199531.1299 Y-441748.0180,  
X-1199541.1506 Y-441770.3500,  
X-1199530.3000 Y-441802.7000,  
X-1199526.1200 Y-441813.5200,  
X-1199525.4000 Y-441815.3900,  
X-1199522.0700 Y-441820.5200,  
X-1199522.0000 Y-441821.0000,  
X-1199521.7700 Y-441822.6700,  
X-1199521.3000 Y-441826.0000,  
X-1199526.3000 Y-441841.8000,  
X-1199525.7000 Y-441854.8000,  
X-1199528.0000 Y-441866.0000,  
X-1199521.2000 Y-441874.0000,  
X-1199511.2000 Y-441878.8000,  
X-1199506.7000 Y-441888.7000,  
X-1199509.2000 Y-441898.0000,  
X-1199482.7500 Y-441926.0000,  
X-1199464.8000 Y-441973.2000,  
X-1199428.4000 Y-441992.6000,  
X-1199394.2000 Y-441985.4000,  
X-1199389.0000 Y-442004.2000,  
X-1199388.2000 Y-442009.7000,  
X-1199397.2000 Y-442010.0000,  
X-1199404.3000 Y-442036.2000,  
X-1199412.2000 Y-442059.4000,  
X-1199402.8000 Y-442077.2000,  
X-1199367.3000 Y-442098.6000,  
X-1199335.4000 Y-442122.4000,  
X-1199334.3000 Y-442141.7000,  
X-1199346.4000 Y-442152.5000,  
X-1199358.8000 Y-442162.2000,  
X-1199356.3000 Y-442173.4000,  
X-1199339.4000 Y-442177.0000,  
X-1199318.8000 Y-442187.0000,  
X-1199296.0000 Y-442218.3000,  
X-1199290.6000 Y-442240.6000,  
X-1199274.8000 Y-442286.0000,  
X-1199266.9700 Y-442353.8500,  
X-1199269.6512 Y-442367.9520,

X-1199276.6000 Y-442404.5000,  
X-1199294.7000 Y-442425.4000,  
X-1199337.8000 Y-442449.6000,  
X-1199374.3000 Y-442463.7000,  
X-1199376.4000 Y-442479.2000,  
X-1199341.5000 Y-442523.0000,  
X-1199335.7500 Y-442546.5000,  
X-1199357.0000 Y-442562.0000,  
X-1199379.5000 Y-442565.0000,  
X-1199406.0000 Y-442570.7500,  
X-1199420.5000 Y-442591.5000,  
X-1199424.0000 Y-442613.0000,  
X-1199420.5000 Y-442648.5000,  
X-1199407.0000 Y-442688.5000,  
X-1199404.0000 Y-442711.5000,  
X-1199405.0000 Y-442730.0000,  
X-1199414.5000 Y-442753.0000,  
X-1199412.5000 Y-442771.0000,  
X-1199395.0000 Y-442777.5000,  
X-1199373.0000 Y-442778.5000,  
X-1199351.7500 Y-442775.5000,  
X-1199332.5000 Y-442763.2500,  
X-1199318.0000 Y-442752.0000,  
X-1199302.5000 Y-442813.7500,  
X-1199294.0000 Y-442884.2500,  
X-1199300.5000 Y-442925.5000,  
X-1199319.2500 Y-442976.2500,  
X-1199323.2800 Y-442987.5700,  
X-1199319.3800 Y-442988.8200,  
X-1199244.3000 Y-442933.3200,  
X-1199215.7100 Y-442899.2900,  
X-1199168.3500 Y-442824.5700,  
X-1199159.7300 Y-442818.7100,  
X-1199125.4500 Y-442795.3900,  
X-1199107.0200 Y-442791.3000,  
X-1199099.9000 Y-442789.7200,  
X-1199091.7600 Y-442787.9100,  
X-1199014.5000 Y-442770.7700,  
X-1199023.1600 Y-442715.8700,  
X-1199188.7600 Y-442582.8600,  
X-1199176.3100 Y-442475.4600,  
X-1199157.1700 Y-442425.7200,  
X-1199132.3600 Y-442400.2700,  
X-1199076.1500 Y-442371.1300,  
X-1199034.3600 Y-442339.3900,  
X-1199021.9700 Y-442344.5500,  
X-1198932.1700 Y-442530.6100,  
X-1198911.9700 Y-442589.0100,  
X-1198853.4700 Y-442641.4200,  
X-1198772.8700 Y-442659.5200,  
X-1198720.3700 Y-442691.2300,  
X-1198530.4700 Y-442749.1400,  
X-1198493.4700 Y-442782.1400,  
X-1198418.6700 Y-442822.9500,  
X-1198331.8700 Y-442855.1500,

X-1198280.6700 Y-442872.6600,  
X-1198248.7700 Y-442884.8600,  
X-1198204.6700 Y-442913.3600,  
X-1198154.7600 Y-442962.0700,  
X-1198100.8600 Y-443026.4700,  
X-1198039.6600 Y-443074.9800,  
X-1197989.3400 Y-443080.4800,  
X-1197935.4400 Y-443077.8800,  
X-1197839.2400 Y-443070.4800,  
X-1197778.9400 Y-443070.9800,  
X-1197776.9783 Y-443080.4376,  
X-1197751.5400 Y-443203.0800,  
X-1197734.7400 Y-443250.9800,  
X-1197714.0400 Y-443282.5800,  
X-1197690.4400 Y-443311.2800,  
X-1197669.6400 Y-443356.5900,  
X-1197649.5400 Y-443403.7900,  
X-1197630.3400 Y-443434.5900,  
X-1197625.6400 Y-443468.4900,  
X-1197634.7400 Y-443545.4900,  
X-1197640.5000 Y-443583.2500,  
X-1197626.5000 Y-443640.5000,  
X-1197606.5000 Y-443684.5000,  
X-1197528.5000 Y-443837.5000,  
X-1197504.5000 Y-443914.0000,  
X-1197491.5000 Y-443933.5000,  
X-1197476.0000 Y-443957.5000,  
X-1197333.0000 Y-444056.7500,  
X-1197323.5000 Y-444065.0000,  
X-1197217.8500 Y-444337.3100,  
X-1197211.9500 Y-444346.9100,  
X-1197186.5000 Y-444383.5000,  
X-1197077.0000 Y-444558.0000,  
X-1196974.5000 Y-444647.7500,  
X-1196896.5000 Y-444701.5000,  
X-1196847.0000 Y-444745.5000,  
X-1196812.0000 Y-444800.0000,  
X-1196760.2500 Y-445000.0000,  
X-1196737.0000 Y-445072.6800,  
X-1196736.5000 Y-445074.2500,  
X-1196714.0000 Y-445116.7500,  
X-1196697.2500 Y-445151.5000,  
X-1196657.0000 Y-445214.5000,  
X-1196602.5000 Y-445250.2500,  
X-1196556.0000 Y-445280.2500,  
X-1196522.7500 Y-445302.7500,  
X-1196466.0000 Y-445334.2500,  
X-1196426.5000 Y-445365.2500,  
X-1196391.0000 Y-445433.2500,  
X-1196404.5000 Y-445492.7500,  
X-1196414.1600 Y-445533.0000,  
X-1196423.0500 Y-445570.0300,  
X-1196455.7500 Y-445706.2500,  
X-1196357.0000 Y-445960.5000,  
X-1196290.2500 Y-446137.2500,

#### spoločná hranica lesný celok Kláštor ↔ lesný celok Blatnica, 241 bodov

X-1200705.6000 Y-435560.1999,  
X-1200710.2000 Y-435538.8000,  
X-1200712.8000 Y-435516.9998,  
X-1200709.7000 Y-435497.3999,  
X-1200704.5000 Y-435478.1999,  
X-1200724.6000 Y-435478.1999,

X-1200741.5000 Y-435458.5000,  
X-1200768.2000 Y-435451.9998,  
X-1200782.4000 Y-435450.3999,  
X-1200801.5000 Y-435458.5999,  
X-1200832.2000 Y-435455.9998,  
X-1200858.3000 Y-435463.4998,

X-1200891.0000 Y-435462.0000,  
X-1200919.5000 Y-435455.9998,  
X-1200966.0000 Y-435447.6999,  
X-1200993.4000 Y-435445.6000,  
X-1201016.0000 Y-435448.3000,  
X-1201031.3000 Y-435452.3999,

X-1201027.6000 Y-435472.6000,  
X-1201038.4000 Y-435482.5000,  
X-1201049.0000 Y-435491.5000,  
X-1201092.0000 Y-435507.6000,  
X-1201106.0000 Y-435510.5000,  
X-1201139.3000 Y-435512.0000,  
X-1201158.0000 Y-435497.3000,  
X-1201186.4000 Y-435498.6000,  
X-1201188.2000 Y-435498.6000,  
X-1201187.0000 Y-435522.0000,  
X-1201193.7500 Y-435539.7500,  
X-1201195.5000 Y-435566.6000,  
X-1201199.6300 Y-435585.2800,  
X-1201198.6500 Y-435612.5000,  
X-1201202.0500 Y-435625.0500,  
X-1201215.9000 Y-435635.3500,  
X-1201242.4000 Y-435639.1499,  
X-1201255.8500 Y-435628.5000,  
X-1201270.6000 Y-435612.0000,  
X-1201276.8000 Y-435617.6499,  
X-1201282.1000 Y-435617.6000,  
X-1201282.7000 Y-435616.1999,  
X-1201296.0000 Y-435583.8000,  
X-1201330.0500 Y-435585.8000,  
X-1201367.5000 Y-435588.0000,  
X-1201374.8500 Y-435585.0500,  
X-1201377.7500 Y-435594.8999,  
X-1201425.1500 Y-435635.3000,  
X-1201460.0000 Y-435653.6000,  
X-1201486.5000 Y-435652.3500,  
X-1201503.5000 Y-435635.1499,  
X-1201518.9700 Y-435630.7199,  
X-1201531.9000 Y-435628.1000,  
X-1201560.3500 Y-435624.8000,  
X-1201567.8000 Y-435625.7600,  
X-1201590.0500 Y-435627.2500,  
X-1201603.9800 Y-435628.8200,  
X-1201620.6900 Y-435629.7600,  
X-1201636.5000 Y-435631.7500,  
X-1201648.8200 Y-435634.8700,  
X-1201669.7500 Y-435640.1000,  
X-1201683.2000 Y-435644.5500,  
X-1201692.5000 Y-435645.6999,  
X-1201696.4000 Y-435653.1999,  
X-1201707.3500 Y-435666.0000,  
X-1201725.7500 Y-435668.5000,  
X-1201735.2000 Y-435664.6999,  
X-1201741.0000 Y-435656.6999,  
X-1201746.0000 Y-435644.0000,  
X-1201758.4000 Y-435632.8000,  
X-1201761.0400 Y-435630.4200,  
X-1201770.8000 Y-435626.5000,  
X-1201784.3500 Y-435626.0500,  
X-1201808.5500 Y-435625.8000,  
X-1201829.5500 Y-435638.7500,  
X-1201849.0500 Y-435635.6000,  
X-1201859.9000 Y-435625.6499,  
X-1201868.2500 Y-435614.6000,  
X-1201869.5000 Y-435596.5000,  
X-1201871.8500 Y-435582.6499,  
X-1201874.8500 Y-435559.7500,  
X-1201888.9000 Y-435545.3999,  
X-1201887.6500 Y-435532.3999,

X-1201887.9000 Y-435521.4499,  
X-1201891.5500 Y-435513.0500,  
X-1201901.9000 Y-435507.0000,  
X-1201922.5000 Y-435508.3500,  
X-1201949.6000 Y-435521.3999,  
X-1201956.8700 Y-435525.5900,  
X-1201983.0000 Y-435541.8000,  
X-1202000.3200 Y-435558.6900,  
X-1202009.8600 Y-435568.3000,  
X-1202017.0500 Y-435575.5000,  
X-1202024.3500 Y-435587.1999,  
X-1202025.1300 Y-435596.4100,  
X-1202022.2000 Y-435611.0000,  
X-1202017.5500 Y-435620.6999,  
X-1202016.8500 Y-435644.4499,  
X-1202023.6500 Y-435672.1499,  
X-1202015.9000 Y-435677.8999,  
X-1202001.7000 Y-435690.6999,  
X-1201997.9900 Y-435701.5100,  
X-1201995.1200 Y-435716.1400,  
X-1201992.7900 Y-435730.2800,  
X-1201991.8000 Y-435741.0000,  
X-1201994.6600 Y-435760.6200,  
X-1201997.1500 Y-435772.0000,  
X-1202002.7500 Y-435784.3000,  
X-1202015.6300 Y-435807.1299,  
X-1202019.5500 Y-435815.6499,  
X-1202030.9500 Y-435830.5000,  
X-1202041.5700 Y-435837.1600,  
X-1202048.9000 Y-435840.6999,  
X-1202067.8500 Y-435843.5500,  
X-1202077.8400 Y-435849.1499,  
X-1202092.8700 Y-435859.6600,  
X-1202097.4400 Y-435862.7800,  
X-1202118.2000 Y-435879.5000,  
X-1202147.8000 Y-435880.6000,  
X-1202155.5300 Y-435878.6299,  
X-1202174.4000 Y-435875.6499,  
X-1202195.9000 Y-435880.3000,  
X-1202217.7700 Y-435892.7500,  
X-1202220.5000 Y-435905.6000,  
X-1202222.2600 Y-435918.8500,  
X-1202224.2500 Y-435925.0000,  
X-1202230.5000 Y-435934.3500,  
X-1202249.5000 Y-435940.3999,  
X-1202273.0000 Y-435935.3999,  
X-1202290.4000 Y-435914.3500,  
X-1202302.6000 Y-435909.5000,  
X-1202307.3000 Y-435910.0000,  
X-1202315.1500 Y-435917.0000,  
X-1202316.3500 Y-435936.5000,  
X-1202317.0700 Y-435941.9200,  
X-1202318.8500 Y-435957.6000,  
X-1202332.0200 Y-435975.9100,  
X-1202352.7500 Y-435996.0000,  
X-1202376.9500 Y-436013.3500,  
X-1202402.6500 Y-436020.3999,  
X-1202419.7500 Y-436018.1999,  
X-1202438.9500 Y-436014.4600,  
X-1202459.0500 Y-436015.0199,  
X-1202460.8500 Y-436026.3500,  
X-1202456.9000 Y-436031.6499,  
X-1202451.0300 Y-436045.0799,

X-1202449.0000 Y-436063.5500,  
X-1202451.0500 Y-436068.1999,  
X-1202455.5000 Y-436074.6000,  
X-1202475.5000 Y-436070.8099,  
X-1202501.7500 Y-436067.1999,  
X-1202512.1000 Y-436072.1999,  
X-1202514.5000 Y-436074.1999,  
X-1202521.6500 Y-436089.0000,  
X-1202524.3000 Y-436105.8999,  
X-1202525.3500 Y-436125.8000,  
X-1202523.3500 Y-436136.7100,  
X-1202522.2500 Y-436142.0100,  
X-1202514.6200 Y-436158.6000,  
X-1202510.2500 Y-436173.8000,  
X-1202510.4600 Y-436186.0900,  
X-1202509.2600 Y-436194.0700,  
X-1202509.8500 Y-436214.5000,  
X-1202511.9800 Y-436229.1000,  
X-1202512.9500 Y-436239.4699,  
X-1202520.4400 Y-436290.7500,  
X-1202524.3000 Y-436350.3000,  
X-1202517.4500 Y-436369.5000,  
X-1202509.2500 Y-436378.5000,  
X-1202491.3100 Y-436392.3000,  
X-1202490.9500 Y-436408.0000,  
X-1202479.8900 Y-436407.6700,  
X-1202474.5000 Y-436407.6099,  
X-1202456.2200 Y-436411.3700,  
X-1202450.5000 Y-436429.1600,  
X-1202429.3500 Y-436430.5500,  
X-1202420.8000 Y-436452.8999,  
X-1202406.3000 Y-436472.3000,  
X-1202417.4000 Y-436482.3500,  
X-1202425.6000 Y-436485.5000,  
X-1202433.7500 Y-436497.1000,  
X-1202431.9500 Y-436503.6499,  
X-1202423.0500 Y-436518.8000,  
X-1202437.9000 Y-436530.7500,  
X-1202443.9500 Y-436540.0500,  
X-1202440.8500 Y-436550.8999,  
X-1202430.5000 Y-436567.8000,  
X-1202407.9100 Y-436570.4699,  
X-1202407.3500 Y-436579.9499,  
X-1202403.7500 Y-436597.1499,  
X-1202394.2000 Y-436594.0000,  
X-1202378.6500 Y-436598.8999,  
X-1202384.3000 Y-436621.0000,  
X-1202373.3500 Y-436636.0000,  
X-1202377.0000 Y-436646.6499,  
X-1202387.5500 Y-436654.3000,  
X-1202396.7000 Y-436641.2600,  
X-1202418.4000 Y-436643.3000,  
X-1202431.2000 Y-436650.4499,  
X-1202443.0500 Y-436660.6999,  
X-1202447.8500 Y-436686.3000,  
X-1202431.0000 Y-436691.2500,  
X-1202418.8000 Y-436690.5500,  
X-1202414.4500 Y-436697.3999,  
X-1202415.3000 Y-436705.8500,  
X-1202421.0500 Y-436706.9499,  
X-1202434.8500 Y-436725.6999,  
X-1202445.1000 Y-436725.6999,  
X-1202458.2500 Y-436731.9499,

X-1202457.3000 Y-436745.8999,  
X-1202453.8800 Y-436759.6400,  
X-1202455.5000 Y-436760.3000,  
X-1202467.7000 Y-436798.5000,  
X-1202479.4000 Y-436826.3999,  
X-1202493.0000 Y-436842.0000,  
X-1202494.0000 Y-436853.8000,  
X-1202490.6000 Y-436862.8000,  
X-1202489.0000 Y-436884.0000,  
X-1202483.6000 Y-436898.6000,  
X-1202493.3000 Y-436905.6999,  
X-1202493.0000 Y-436935.6000,

X-1202488.8000 Y-436959.0000,  
X-1202483.5000 Y-436963.0000,  
X-1202478.4000 Y-436978.6000,  
X-1202482.4000 Y-437003.3999,  
X-1202485.0000 Y-437027.8000,  
X-1202477.4000 Y-437035.0000,  
X-1202480.5000 Y-437038.8000,  
X-1202493.0000 Y-437043.3999,  
X-1202493.0000 Y-437048.5000,  
X-1202500.8000 Y-437055.3999,  
X-1202515.0000 Y-437082.0000,  
X-1202521.0000 Y-437095.0000,

X-1202520.9200 Y-437100.9400,  
X-1202520.8700 Y-437104.2399,  
X-1202520.8000 Y-437109.0000,  
X-1202521.2700 Y-437109.2500,  
X-1202522.9400 Y-437110.1400,  
X-1202528.2400 Y-437112.9499,  
X-1202528.4200 Y-437113.0500,  
X-1202529.5100 Y-437113.6299,  
X-1202530.4000 Y-437114.1000,  
X-1200705.0416 Y-435562.7139

### spoločná hranica lesný celok Kláštor ↔ lesný celok Turčianske Teplice, 107 bodov

X-1202533.0700 Y-437116.6499,  
X-1202537.2000 Y-437120.6000,  
X-1202544.7000 Y-437130.5000,  
X-1202546.2000 Y-437147.0000,  
X-1202540.1000 Y-437168.5000,  
X-1202543.0000 Y-437182.1999,  
X-1202541.8600 Y-437184.4400,  
X-1202539.5100 Y-437189.0500,  
X-1202532.1000 Y-437203.6000,  
X-1202537.7000 Y-437206.0000,  
X-1202537.5000 Y-437215.1999,  
X-1202544.3000 Y-437218.3000,  
X-1202547.3000 Y-437228.6999,  
X-1202555.2000 Y-437237.5000,  
X-1202556.1000 Y-437248.0000,  
X-1202563.0000 Y-437266.8000,  
X-1202567.3000 Y-437265.0000,  
X-1202574.1600 Y-437270.1200,  
X-1202580.0900 Y-437270.7699,  
X-1202583.9000 Y-437270.9800,  
X-1202675.9200 Y-437276.0900,  
X-1202755.4000 Y-437280.5100,  
X-1202784.0400 Y-437234.9100,  
X-1202810.0500 Y-437189.5000,  
X-1202871.9400 Y-437214.5100,  
X-1202902.7700 Y-437199.7800,  
X-1202926.6200 Y-437194.6100,  
X-1202964.6700 Y-437195.0900,  
X-1203051.6600 Y-437219.5900,  
X-1203063.1500 Y-437239.9100,  
X-1203059.3400 Y-437261.0200,  
X-1203025.2700 Y-437334.5000,  
X-1203031.7600 Y-437377.7400,  
X-1203045.5400 Y-437406.9700,  
X-1203065.5600 Y-437425.0500,  
X-1203085.4500 Y-437431.6500,

X-1203133.8500 Y-437429.8100,  
X-1203225.9700 Y-437488.5800,  
X-1203238.8300 Y-437521.2000,  
X-1203174.4400 Y-437551.3200,  
X-1203161.3100 Y-437568.4300,  
X-1203154.8900 Y-437576.7900,  
X-1203143.0900 Y-437591.4100,  
X-1203128.4600 Y-437628.0000,  
X-1203124.0600 Y-437680.6600,  
X-1203130.2800 Y-437715.7600,  
X-1203142.4100 Y-437755.5300,  
X-1203162.7700 Y-437764.9700,  
X-1203197.8600 Y-437781.2400,  
X-1203233.4900 Y-437849.9200,  
X-1203250.9000 Y-437862.5500,  
X-1203262.0000 Y-437865.7800,  
X-1203295.3300 Y-437863.4300,  
X-1203319.7400 Y-437860.7300,  
X-1203335.0100 Y-437872.9900,  
X-1203343.7500 Y-437925.3700,  
X-1203351.6500 Y-437942.4500,  
X-1203362.0000 Y-437951.9900,  
X-1203374.2100 Y-437957.1600,  
X-1203389.3300 Y-437956.3900,  
X-1203399.5300 Y-437955.0300,  
X-1203470.2000 Y-437885.1600,  
X-1203492.6300 Y-437886.5900,  
X-1203520.4100 Y-437894.3400,  
X-1203517.9200 Y-437947.5100,  
X-1203498.9600 Y-437999.9100,  
X-1203456.2200 Y-438032.2200,  
X-1203453.8300 Y-438037.4900,  
X-1203452.8100 Y-438039.7500,  
X-1203445.9200 Y-438044.1600,  
X-1203444.6400 Y-438044.9800,  
X-1203449.3400 Y-438057.7000,

X-1203470.3000 Y-438074.2100,  
X-1203473.5100 Y-438067.4400,  
X-1203565.7100 Y-438130.8000,  
X-1203602.9600 Y-438155.3500,  
X-1203645.6100 Y-438185.7400,  
X-1203682.4600 Y-438213.2800,  
X-1203739.8400 Y-438255.5000,  
X-1203790.8900 Y-438292.4400,  
X-1203884.0700 Y-438362.3500,  
X-1203949.6200 Y-438407.4500,  
X-1203964.1500 Y-438426.0900,  
X-1203977.4000 Y-438437.2300,  
X-1203983.4000 Y-438442.2800,  
X-1203982.3100 Y-438428.6800,  
X-1204046.5200 Y-438475.6700,  
X-1204120.7300 Y-438527.9200,  
X-1204203.0700 Y-438586.4600,  
X-1204276.4800 Y-438637.6100,  
X-1204348.1900 Y-438690.7900,  
X-1204424.3400 Y-438746.4800,  
X-1204440.5300 Y-438759.2000,  
X-1204483.6100 Y-438787.1100,  
X-1204484.2400 Y-438797.3400,  
X-1204487.4500 Y-438798.9900,  
X-1204493.1400 Y-438801.9100,  
X-1204496.7700 Y-438803.7700,  
X-1204514.5000 Y-438807.9500,  
X-1204540.4700 Y-438821.7700,  
X-1204546.8100 Y-438825.1400,  
X-1204566.9700 Y-438836.6100,  
X-1204587.3900 Y-438848.2300,  
X-1204629.8000 Y-438869.2900,  
X-1204660.0900 Y-438882.6600,  
X-1204708.5200 Y-438901.1800,  
X-1204774.0700 Y-438923.4000,

### spoločná hranica lesný celok Kláštor ↔ lesný celok Rudno, 281 bodov

X-1204845.9681 Y-438943.0086,  
X-1204846.9401 Y-438948.6785,  
X-1204853.4432 Y-439008.4912,  
X-1204863.9920 Y-439096.6179,  
X-1204864.1771 Y-439098.1637,  
X-1204870.4385 Y-439112.0283,  
X-1204894.5897 Y-439282.8758,  
X-1204894.1425 Y-439341.4648,  
X-1204871.3330 Y-439415.2602,

X-1204882.5141 Y-439450.5925,  
X-1204929.4748 Y-439452.8287,  
X-1204925.8968 Y-439470.7185,  
X-1204904.4291 Y-439468.4823,  
X-1204879.8306 Y-439474.2965,  
X-1204865.5188 Y-439481.4524,  
X-1204867.1960 Y-439500.8632,  
X-1204841.3315 Y-439499.7263,  
X-1204828.8256 Y-439508.2530,

X-1204822.8569 Y-439529.2856,  
X-1204827.1203 Y-439553.8710,  
X-1204820.0147 Y-439595.3678,  
X-1204812.6248 Y-439614.9793,  
X-1204797.8452 Y-439626.0641,  
X-1204779.9390 Y-439628.7642,  
X-1204737.8738 Y-439615.1215,  
X-1204719.1149 Y-439586.2727,  
X-1204709.1671 Y-439553.5868,



X-1204704.9037 Y-439535.1122,  
X-1204688.4187 Y-439529.7120,  
X-1204645.7850 Y-439527.0118,  
X-1204596.6141 Y-439514.7902,  
X-1204524.9895 Y-439500.7210,  
X-1204496.5671 Y-439507.6845,  
X-1204481.7874 Y-439514.7902,  
X-1204459.3336 Y-439529.0014,  
X-1204443.4170 Y-439533.2648,  
X-1204471.6831 Y-439565.2172,  
X-1204481.1655 Y-439592.5266,  
X-1204500.1303 Y-439748.2277,  
X-1204500.5096 Y-439785.9676,  
X-1204493.3030 Y-439807.5875,  
X-1204438.6843 Y-439926.4969,  
X-1204368.1352 Y-440070.0605,  
X-1204340.4466 Y-440123.9206,  
X-1204329.0677 Y-440139.6614,  
X-1204314.0171 Y-440155.0322,  
X-1204306.6216 Y-440162.5851,  
X-1204293.4139 Y-440176.0738,  
X-1204209.9687 Y-440270.3289,  
X-1204161.7981 Y-440326.2751,  
X-1204131.4544 Y-440360.7911,  
X-1204078.3529 Y-440420.7199,  
X-1204048.7600 Y-440456.9500,  
X-1203888.1900 Y-440684.2400,  
X-1203872.5600 Y-440703.0800,  
X-1203850.6500 Y-440721.3900,  
X-1203849.7700 Y-440723.4100,  
X-1203849.2400 Y-440723.6800,  
X-1203842.9200 Y-440729.6300,  
X-1203842.4000 Y-440729.9700,  
X-1203839.8700 Y-440731.9000,  
X-1203838.1300 Y-440733.7900,  
X-1203835.3400 Y-440737.4600,  
X-1203833.0600 Y-440742.0500,  
X-1203832.7200 Y-440743.6200,  
X-1203832.0100 Y-440746.1300,  
X-1203831.9800 Y-440752.2900,  
X-1203833.8500 Y-440766.7600,  
X-1203840.2900 Y-440812.9100,  
X-1203856.9400 Y-440889.4800,  
X-1203861.1800 Y-440903.4800,  
X-1203865.4600 Y-440925.9600,  
X-1203878.1600 Y-440992.7300,  
X-1203897.7900 Y-441215.0200,  
X-1203900.8600 Y-441250.0400,  
X-1203902.6900 Y-441269.7200,  
X-1203903.6100 Y-441311.5900,  
X-1203903.7200 Y-441316.8300,  
X-1203902.1600 Y-441366.2400,  
X-1203902.0200 Y-441370.8100,  
X-1203900.6900 Y-441412.9200,  
X-1203899.4400 Y-441417.1100,  
X-1203867.4400 Y-441524.8300,  
X-1203857.0100 Y-441567.8600,  
X-1203865.0400 Y-441581.6300,  
X-1203875.6400 Y-441593.0600,  
X-1203880.3600 Y-441598.1500,  
X-1203882.0500 Y-441599.9800,  
X-1203886.8800 Y-441605.4300,  
X-1203908.2200 Y-441629.5200,

X-1203912.6900 Y-441634.5700,  
X-1203922.9900 Y-441644.3600,  
X-1203932.9300 Y-441653.8200,  
X-1203935.3800 Y-441656.1500,  
X-1203957.1500 Y-441659.4200,  
X-1203960.1400 Y-441659.8700,  
X-1203961.0600 Y-441660.0100,  
X-1203965.3300 Y-441677.8100,  
X-1203976.3400 Y-441709.4400,  
X-1203978.8600 Y-441716.6700,  
X-1203980.9300 Y-441722.6100,  
X-1204014.9600 Y-441754.1200,  
X-1204025.4300 Y-441763.9600,  
X-1204037.0000 Y-441769.1900,  
X-1204038.0800 Y-441770.6000,  
X-1204043.5000 Y-441777.6500,  
X-1204054.3700 Y-441791.8100,  
X-1204069.7400 Y-441820.3200,  
X-1204072.7000 Y-441829.1900,  
X-1204082.6000 Y-441858.8200,  
X-1204084.0300 Y-441868.9500,  
X-1204084.6000 Y-441872.9500,  
X-1204085.0300 Y-441876.0000,  
X-1204094.6400 Y-441882.6000,  
X-1204098.2000 Y-441885.0500,  
X-1204108.6800 Y-441892.2500,  
X-1204110.4300 Y-441894.9600,  
X-1204112.1800 Y-441897.6600,  
X-1204121.3600 Y-441911.8300,  
X-1204143.5100 Y-441944.9100,  
X-1204151.5400 Y-441956.8900,  
X-1204159.9700 Y-441969.4700,  
X-1204168.7000 Y-441982.5100,  
X-1204205.6400 Y-442037.6800,  
X-1204209.1200 Y-442048.9600,  
X-1204210.3300 Y-442052.8800,  
X-1204214.0200 Y-442071.8900,  
X-1204217.6800 Y-442137.3700,  
X-1204225.3100 Y-442167.5200,  
X-1204227.9400 Y-442173.6400,  
X-1204231.2800 Y-442181.4000,  
X-1204236.3800 Y-442193.2500,  
X-1204239.1200 Y-442199.6100,  
X-1204262.8000 Y-442254.6400,  
X-1204269.5500 Y-442273.4000,  
X-1204271.8800 Y-442295.0500,  
X-1204270.5300 Y-442324.5500,  
X-1204261.6200 Y-442517.6400,  
X-1204260.7300 Y-442537.0200,  
X-1204264.1300 Y-442542.4100,  
X-1204274.4700 Y-442568.6000,  
X-1204277.9600 Y-442576.1400,  
X-1204293.9400 Y-442608.3500,  
X-1204302.0300 Y-442627.5900,  
X-1204302.9100 Y-442629.7000,  
X-1204305.8600 Y-442639.4300,  
X-1204314.6400 Y-442668.4000,  
X-1204311.9800 Y-442679.1500,  
X-1204313.3600 Y-442709.7500,  
X-1204311.6500 Y-442731.8200,  
X-1204303.1400 Y-442751.1100,  
X-1204302.2400 Y-442753.1600,  
X-1204299.5200 Y-442759.5600,

X-1204279.0400 Y-442807.7900,  
X-1204281.2700 Y-442810.3900,  
X-1204267.0500 Y-442827.7500,  
X-1204249.8600 Y-442846.3800,  
X-1204238.6500 Y-442910.6700,  
X-1204215.2500 Y-442998.2200,  
X-1204212.3500 Y-443041.4000,  
X-1204211.6300 Y-443057.9800,  
X-1204206.6600 Y-443076.7700,  
X-1204202.5800 Y-443092.1000,  
X-1204199.2800 Y-443104.5000,  
X-1204196.0300 Y-443116.6900,  
X-1204193.2700 Y-443140.7200,  
X-1204195.6900 Y-443167.8400,  
X-1204198.5800 Y-443170.8000,  
X-1204207.6100 Y-443180.0700,  
X-1204196.3500 Y-443214.8200,  
X-1204176.9200 Y-443234.8800,  
X-1204171.1600 Y-443240.8300,  
X-1204165.9100 Y-443246.2500,  
X-1204159.1700 Y-443253.2100,  
X-1204159.7900 Y-443270.0600,  
X-1204160.4876 Y-443288.8339,  
X-1204160.5700 Y-443291.0500,  
X-1204161.0400 Y-443303.6800,  
X-1204161.1100 Y-443305.5700,  
X-1204161.1600 Y-443306.9200,  
X-1204161.7800 Y-443323.7200,  
X-1204164.5600 Y-443323.5700,  
X-1204166.2300 Y-443325.1300,  
X-1204166.8996 Y-443326.0984,  
X-1204176.8500 Y-443340.4900,  
X-1204150.4500 Y-443383.6900,  
X-1204133.1500 Y-443413.2900,  
X-1204127.7500 Y-443437.4700,  
X-1204111.3500 Y-443510.9900,  
X-1204124.6000 Y-443598.6000,  
X-1204147.5500 Y-443676.6000,  
X-1204149.7500 Y-443707.9000,  
X-1204150.2760 Y-443710.9068,  
X-1204156.1000 Y-443744.2000,  
X-1204131.3600 Y-443856.0000,  
X-1204130.6307 Y-443858.0770,  
X-1204100.4600 Y-443944.0000,  
X-1204062.1600 Y-444009.7100,  
X-1204020.4600 Y-444062.7100,  
X-1204027.0600 Y-444109.3100,  
X-1204030.3600 Y-444184.1100,  
X-1204020.0600 Y-444268.8200,  
X-1204008.9600 Y-444299.4200,  
X-1204008.1565 Y-444301.7401,  
X-1204000.9600 Y-444322.5200,  
X-1203982.8300 Y-444365.1100,  
X-1203977.2800 Y-444378.1600,  
X-1203977.1100 Y-444378.5500,  
X-1203959.3100 Y-444430.1500,  
X-1203950.0100 Y-444476.9500,  
X-1203971.1100 Y-444518.2500,  
X-1203979.4200 Y-444588.8500,  
X-1203974.6200 Y-444650.0500,  
X-1203969.8200 Y-444697.4500,  
X-1203963.1800 Y-444712.8000,  
X-1203961.8700 Y-444715.8400,

X-1203941.1200 Y-444763.8500,  
X-1203920.6200 Y-444836.5500,  
X-1203907.6100 Y-444893.0200,  
X-1203904.1200 Y-444908.1500,  
X-1203902.4200 Y-444951.4500,  
X-1203921.2200 Y-444970.7500,  
X-1203920.6900 Y-445001.2700,  
X-1203921.8000 Y-445006.8700,  
X-1203924.3900 Y-445019.8700,  
X-1203911.6900 Y-445063.8700,  
X-1203886.2900 Y-445097.8800,  
X-1203883.4000 Y-445126.0800,  
X-1203880.5000 Y-445131.6800,  
X-1203846.9000 Y-445183.7800,  
X-1203836.0000 Y-445259.4900,  
X-1203832.1000 Y-445303.3900,  
X-1203822.3100 Y-445363.6000,  
X-1203801.8100 Y-445403.1000,  
X-1203790.9100 Y-445417.1000,  
X-1203777.6200 Y-445459.5200,  
X-1203764.4400 Y-445501.6000,  
X-1203763.1000 Y-445505.8800,

X-1203731.1800 Y-445607.7700,  
X-1203730.9500 Y-445608.5000,  
X-1203730.3200 Y-445610.5200,  
X-1203731.7200 Y-445611.8500,  
X-1203749.8900 Y-445629.0600,  
X-1203796.9200 Y-445673.6200,  
X-1203866.7300 Y-445721.2200,  
X-1203878.5300 Y-445768.0200,  
X-1203873.7300 Y-445770.6200,  
X-1203862.0300 Y-445777.0300,  
X-1203827.5300 Y-445809.9300,  
X-1203758.9400 Y-445894.0400,  
X-1203732.4400 Y-445950.9500,  
X-1203713.0400 Y-445951.8500,  
X-1203697.0600 Y-446042.1500,  
X-1203693.3400 Y-446063.1600,  
X-1203689.4500 Y-446085.1600,  
X-1203677.7500 Y-446211.9700,  
X-1203663.4500 Y-446250.5700,  
X-1203664.7400 Y-446253.0600,  
X-1203671.9500 Y-446267.0700,  
X-1203669.3600 Y-446275.4700,

X-1203677.3600 Y-446280.5700,  
X-1203646.8600 Y-446365.7800,  
X-1203646.0697 Y-446368.5553,  
X-1203629.0600 Y-446428.2900,  
X-1203628.0118 Y-446432.9275,  
X-1203623.5200 Y-446452.8000,  
X-1203610.4700 Y-446510.4900,  
X-1203594.8700 Y-446517.0900,  
X-1203515.6700 Y-446534.3000,  
X-1203490.9700 Y-446552.8000,  
X-1203468.0300 Y-446662.2000,  
X-1203498.1218 Y-446683.0119,  
X-1203531.2300 Y-446705.9100,  
X-1203532.1482 Y-446706.4504,  
X-1203541.4128 Y-446711.9030,  
X-1203588.8300 Y-446739.8100,  
X-1203639.4300 Y-446792.5100,  
X-1203702.5300 Y-446872.9200,  
X-1203755.0300 Y-446978.8300,  
X-1203833.2300 Y-447133.5400,  
X-1203721.4000 Y-447188.6000,

#### spoločná hranica lesný celok Kláštor ↔ lesný celok Nitrianske Pravno, 99 bodov

X-1203721.4000 Y-447188.6000,  
X-1203676.0000 Y-447210.0000,  
X-1203392.2500 Y-447402.5000,  
X-1203330.0000 Y-447418.5000,  
X-1203188.7500 Y-447423.2500,  
X-1203086.0000 Y-447387.0000,  
X-1203035.5000 Y-447406.5000,  
X-1202986.0000 Y-447474.0000,  
X-1202898.5000 Y-447526.0000,  
X-1202876.0000 Y-447580.5000,  
X-1202753.2500 Y-447575.0000,  
X-1202691.7500 Y-447604.5000,  
X-1202641.0000 Y-447603.0000,  
X-1202543.5000 Y-447650.5000,  
X-1202507.0000 Y-447683.0000,  
X-1202458.0000 Y-447768.0000,  
X-1202433.5000 Y-447813.0000,  
X-1202347.7500 Y-447825.5000,  
X-1202301.2500 Y-447897.0000,  
X-1202269.5000 Y-447915.0000,  
X-1202278.0000 Y-447953.5000,  
X-1202267.5000 Y-448062.2500,  
X-1202168.5700 Y-448230.8400,  
X-1202167.7100 Y-448232.3100,  
X-1202162.8100 Y-448240.7100,  
X-1202161.8900 Y-448242.1500,  
X-1202149.7100 Y-448261.3100,  
X-1202146.7100 Y-448265.9100,  
X-1202127.0000 Y-448328.5000,  
X-1202079.2500 Y-448322.5000,  
X-1202008.7500 Y-448343.5000,  
X-1201952.5000 Y-448369.0000,  
X-1201882.5000 Y-448368.0000,

X-1201843.7500 Y-448369.5000,  
X-1201825.7500 Y-448377.5000,  
X-1201636.4500 Y-448492.9800,  
X-1201629.6000 Y-448497.1500,  
X-1201531.5000 Y-448557.0000,  
X-1201512.1900 Y-448563.2400,  
X-1201471.7500 Y-448646.5000,  
X-1201418.0000 Y-448763.2500,  
X-1201407.0000 Y-448769.2000,  
X-1201381.7500 Y-448771.5000,  
X-1201340.0000 Y-448792.2500,  
X-1201302.0000 Y-448813.5000,  
X-1201238.9200 Y-448841.6400,  
X-1201167.5000 Y-448873.5000,  
X-1201163.5000 Y-448975.0000,  
X-1201120.0000 Y-449012.0000,  
X-1201123.0000 Y-449016.2500,  
X-1201112.0000 Y-449028.0000,  
X-1201139.0000 Y-449062.2500,  
X-1201177.2700 Y-449129.7900,  
X-1201186.0000 Y-449167.0000,  
X-1201147.2700 Y-449275.6800,  
X-1201123.7500 Y-449326.0000,  
X-1201205.5000 Y-449486.2500,  
X-1201208.0500 Y-449515.8400,  
X-1201209.7500 Y-449535.5000,  
X-1201192.4700 Y-449582.5100,  
X-1201170.5000 Y-449642.2500,  
X-1201173.7500 Y-449686.5000,  
X-1201188.6600 Y-449711.1400,  
X-1201214.0000 Y-449753.0000,  
X-1201255.0000 Y-449836.0000,  
X-1201296.5000 Y-449889.0000,

X-1201369.3900 Y-450051.5000,  
X-1201392.5000 Y-450119.5000,  
X-1201356.5000 Y-450298.5000,  
X-1201342.0000 Y-450343.5000,  
X-1201313.0000 Y-450416.5000,  
X-1201243.0000 Y-450474.5000,  
X-1201231.5000 Y-450516.0000,  
X-1201242.4900 Y-450594.8000,  
X-1201254.0000 Y-450626.5000,  
X-1201236.1100 Y-450692.5200,  
X-1201245.5000 Y-450688.5000,  
X-1201335.7000 Y-451032.6200,  
X-1201256.5000 Y-451149.0000,  
X-1201234.0000 Y-451250.0000,  
X-1201165.5000 Y-451387.5000,  
X-1201152.5000 Y-451422.5000,  
X-1201147.0000 Y-451448.0000,  
X-1201163.0000 Y-451517.5000,  
X-1201154.4900 Y-451531.8600,  
X-1201152.0000 Y-451549.5000,  
X-1201152.5000 Y-451613.0000,  
X-1200989.5000 Y-451913.5000,  
X-1200960.0000 Y-451988.5000,  
X-1200930.5000 Y-452180.5000,  
X-1200911.4400 Y-452215.2200,  
X-1200875.5000 Y-452267.0000,  
X-1200823.0000 Y-452375.0000,  
X-1200736.0000 Y-452642.5000,  
X-1200623.5000 Y-452829.0000,  
X-1200539.0000 Y-452954.5000,  
X-1200428.0000 Y-453034.0000,  
X-1200316.0000 Y-453164.5000,  
X-1200183.6900 Y-453289.6800,

#### spoločná hranica lesný celok Kláštor ↔ lesný celok Rajcecko, 231 bodov

X-1200182.8334 Y-453287.4971,  
X-1200169.1000 Y-453252.5000,  
X-1200121.0100 Y-453175.2000,  
X-1200075.9100 Y-453125.4000,

X-1200043.2100 Y-453112.9000,  
X-1200022.0770 Y-453089.9616,  
X-1199941.4900 Y-453002.4900,  
X-1199930.2800 Y-452990.8900,

X-1199908.6174 Y-452970.1883,  
X-1199880.6800 Y-452943.4900,  
X-1199829.8800 Y-452921.6900,  
X-1199747.2800 Y-452911.6000,

X-1199709.0800 Y-452889.0000,  
X-1199669.9800 Y-452850.7000,  
X-1199526.6800 Y-452768.0000,  
X-1199439.6100 Y-452723.5800,  
X-1199429.0800 Y-452718.2000,  
X-1199365.5800 Y-452684.7000,  
X-1199315.2764 Y-452632.4210,  
X-1199256.0800 Y-452570.9000,  
X-1199226.0800 Y-452556.1000,  
X-1199107.4800 Y-452549.1000,  
X-1199039.0800 Y-452543.7000,  
X-1198980.7800 Y-452547.4100,  
X-1198830.0800 Y-452504.6100,  
X-1198736.8800 Y-452477.5500,  
X-1198680.5557 Y-452452.6844,  
X-1198672.9800 Y-452449.3400,  
X-1198624.7800 Y-452444.5400,  
X-1198574.0800 Y-452480.8400,  
X-1198553.3800 Y-452486.0400,  
X-1198515.5800 Y-452494.4300,  
X-1198470.1150 Y-452512.9726,  
X-1198442.7899 Y-452524.1169,  
X-1198433.9800 Y-452527.7100,  
X-1198397.5075 Y-452548.9517,  
X-1198353.2800 Y-452574.7100,  
X-1198356.4938 Y-452538.6562,  
X-1198364.2896 Y-452451.2001,  
X-1198365.3700 Y-452439.0800,  
X-1198350.8588 Y-452413.3822,  
X-1198333.0700 Y-452381.8800,  
X-1198284.7700 Y-452319.6800,  
X-1198188.7700 Y-452242.1800,  
X-1198177.8874 Y-452234.1027,  
X-1198126.8226 Y-452196.2016,  
X-1198108.4700 Y-452182.5800,  
X-1198100.1700 Y-452176.0800,  
X-1198055.3700 Y-452122.0800,  
X-1198020.9695 Y-452072.5219,  
X-1197971.6700 Y-452001.5000,  
X-1197934.2700 Y-451961.9000,  
X-1197921.5975 Y-451953.1841,  
X-1197861.3000 Y-451911.7128,  
X-1197800.0700 Y-451869.6000,  
X-1197769.2700 Y-451856.1000,  
X-1197695.0700 Y-451803.0000,  
X-1197680.5600 Y-451791.8200,  
X-1197679.3700 Y-451783.6000,  
X-1197681.4700 Y-451661.6100,  
X-1197674.4700 Y-451622.0100,  
X-1197643.6600 Y-451539.5100,  
X-1197578.5876 Y-451436.7787,  
X-1197573.1600 Y-451428.2100,  
X-1197510.4600 Y-451359.8200,  
X-1197429.0600 Y-451290.3200,  
X-1197392.6600 Y-451263.4200,  
X-1197329.0600 Y-451217.4200,  
X-1197302.0600 Y-451199.1200,  
X-1197265.5432 Y-451179.4957,  
X-1197236.5600 Y-451163.9200,  
X-1197220.6600 Y-451138.2200,  
X-1197219.9632 Y-451137.3071,  
X-1197154.2500 Y-451051.2200,  
X-1197128.8966 Y-451035.2387,

X-1197107.4500 Y-451021.7200,  
X-1197064.3500 Y-450986.6200,  
X-1197022.7500 Y-450960.6200,  
X-1196937.3500 Y-450919.3200,  
X-1196927.8885 Y-450907.8519,  
X-1196859.5500 Y-450825.0200,  
X-1196847.4914 Y-450805.1065,  
X-1196773.7500 Y-450683.3300,  
X-1196773.0547 Y-450682.1573,  
X-1196758.7500 Y-450658.0300,  
X-1196758.0118 Y-450656.0803,  
X-1196719.4500 Y-450554.2300,  
X-1196715.4500 Y-450520.6300,  
X-1196702.7400 Y-450472.1300,  
X-1196701.0400 Y-450446.9300,  
X-1196697.8400 Y-450408.9300,  
X-1196698.3462 Y-450400.3082,  
X-1196699.6100 Y-450378.7800,  
X-1196699.8600 Y-450374.5800,  
X-1196702.2400 Y-450334.1400,  
X-1196703.8309 Y-450326.8141,  
X-1196715.6100 Y-450272.5700,  
X-1196727.6421 Y-450216.9472,  
X-1196743.9300 Y-450141.6500,  
X-1196757.3300 Y-450080.4500,  
X-1196775.7604 Y-450034.0252,  
X-1196775.8300 Y-450033.8500,  
X-1196776.7795 Y-450033.1250,  
X-1196829.5000 Y-449992.8700,  
X-1196855.3000 Y-449989.4700,  
X-1196878.4200 Y-449975.8600,  
X-1196896.4000 Y-449965.2700,  
X-1196947.4900 Y-449923.0700,  
X-1196954.9900 Y-449895.1700,  
X-1196954.0900 Y-449865.1800,  
X-1196956.0040 Y-449839.8390,  
X-1196956.5900 Y-449832.0800,  
X-1196972.5800 Y-449781.7800,  
X-1196990.3800 Y-449761.2800,  
X-1197049.8398 Y-449731.4303,  
X-1197059.8800 Y-449726.3900,  
X-1197092.4800 Y-449725.5900,  
X-1197158.5822 Y-449709.4835,  
X-1197254.1800 Y-449686.1900,  
X-1197318.1800 Y-449653.9000,  
X-1197344.1800 Y-449633.8000,  
X-1197353.6800 Y-449626.1000,  
X-1197357.8932 Y-449598.5937,  
X-1197360.3489 Y-449582.5618,  
X-1197366.4700 Y-449542.6000,  
X-1197379.2891 Y-449511.9445,  
X-1197387.0849 Y-449493.3018,  
X-1197404.7700 Y-449451.0100,  
X-1197439.6600 Y-449393.7100,  
X-1197494.2600 Y-449281.3200,  
X-1197549.3209 Y-449202.3511,  
X-1197552.5500 Y-449197.7200,  
X-1197559.0312 Y-449192.4390,  
X-1197567.1721 Y-449185.8057,  
X-1197578.1344 Y-449176.8735,  
X-1197601.1500 Y-449158.1200,  
X-1197628.9400 Y-449094.7300,  
X-1197628.3688 Y-449027.6859,

X-1197628.1400 Y-449000.8300,  
X-1197620.6300 Y-448928.6400,  
X-1197585.4300 Y-448864.8400,  
X-1197547.2200 Y-448817.6400,  
X-1197480.4270 Y-448735.9533,  
X-1197474.1200 Y-448728.2400,  
X-1197465.4200 Y-448717.2500,  
X-1197430.7054 Y-448653.5438,  
X-1197429.5100 Y-448651.3500,  
X-1197445.4500 Y-448641.9700,  
X-1197453.3100 Y-448637.3500,  
X-1197457.7240 Y-448630.2453,  
X-1197493.0100 Y-448573.4500,  
X-1197494.3400 Y-448570.4400,  
X-1197516.2000 Y-448520.7600,  
X-1197523.6044 Y-448493.5886,  
X-1197569.9900 Y-448323.3700,  
X-1197572.6830 Y-448288.6255,  
X-1197575.0900 Y-448257.5700,  
X-1197569.4800 Y-448221.0700,  
X-1197564.7779 Y-448215.5970,  
X-1197507.8800 Y-448149.3700,  
X-1197506.8982 Y-448147.5602,  
X-1197506.8657 Y-448147.5003,  
X-1197492.3700 Y-448120.7800,  
X-1197492.4380 Y-448103.0412,  
X-1197492.4380 Y-448103.0199,  
X-1197492.4700 Y-448094.6800,  
X-1197510.9759 Y-448049.0590,  
X-1197515.4700 Y-448037.9800,  
X-1197551.4700 Y-447997.0800,  
X-1197574.9600 Y-447952.3900,  
X-1197589.3800 Y-447837.8400,  
X-1197571.2500 Y-447781.8900,  
X-1197509.3778 Y-447737.6083,  
X-1197487.1500 Y-447721.7000,  
X-1197465.9400 Y-447637.3000,  
X-1197457.5320 Y-447586.2767,  
X-1197438.1800 Y-447468.8400,  
X-1197424.9800 Y-447455.2300,  
X-1197405.8700 Y-447417.6300,  
X-1197405.4700 Y-447405.6300,  
X-1197360.6558 Y-447392.6890,  
X-1197353.3317 Y-447390.5740,  
X-1197330.6700 Y-447384.0300,  
X-1197266.9700 Y-447361.3300,  
X-1197266.5029 Y-447361.0166,  
X-1197202.2600 Y-447317.9200,  
X-1197168.3364 Y-447304.1170,  
X-1197130.2000 Y-447288.6000,  
X-1197032.5000 Y-447260.0000,  
X-1196987.7500 Y-447255.2500,  
X-1196943.5000 Y-447239.0000,  
X-1196873.5000 Y-447212.5000,  
X-1196821.5000 Y-447190.2500,  
X-1196750.7500 Y-447179.0000,  
X-1196703.5000 Y-447170.2500,  
X-1196610.2500 Y-447162.5000,  
X-1196530.4214 Y-447148.8048,  
X-1196499.5000 Y-447143.5000,  
X-1196436.5000 Y-447136.5000,  
X-1196420.2500 Y-447121.7500,  
X-1196401.2792 Y-447091.0091,

X-1196386.0000 Y-447066.2500,  
X-1196372.6385 Y-447049.1902,  
X-1196346.0494 Y-447015.2416,  
X-1196330.0000 Y-446994.7500,  
X-1196328.2934 Y-446992.6331,  
X-1196305.6165 Y-446964.5042,  
X-1196258.2500 Y-446905.7500,  
X-1196216.5325 Y-446859.0610,  
X-1196210.0000 Y-446851.7500,  
X-1196204.0842 Y-446847.7458,  
X-1196152.7500 Y-446813.0000,  
X-1196115.5437 Y-446799.4977,  
X-1196090.7500 Y-446790.5000,  
X-1196070.2500 Y-446776.7500,  
X-1196051.5000 Y-446746.7500,  
X-1196032.0000 Y-446701.7500,  
X-1196023.5000 Y-446667.7500,  
X-1196021.0000 Y-446630.5000,  
X-1196021.0489 Y-446630.1558,  
X-1196028.7500 Y-446576.0000,  
X-1196038.0000 Y-446526.7500,  
X-1196055.0000 Y-446460.7500,  
X-1196069.6457 Y-446407.4491,  
X-1196070.2500 Y-446405.2500,  
X-1196088.0000 Y-446364.7500,  
X-1196098.7500 Y-446337.2500,  
X-1196176.5000 Y-446263.5000,  
X-1196209.0000 Y-446246.2500,  
X-1200183.6900 Y-453289.6800,  
X-1196290.2500 Y-446137.2500,