



Č.j. OÚ-ZA-OOP4-2022/058557/CVI

V Žiline 20.12.2022

## Rozhodnutie

Okresný úrad Žilina, odbor opravných prostriedkov, referát lesného hospodárstva (ďalej len OÚ) ako príslušný orgán podľa § 59 ods. 2 písm. h) zákona č. 326/2005 Z.z. o lesoch v znení neskorších predpisov ( ďalej len zákon o lesoch ) v súlade s § 46 zákona č. 71/1967 Zb. o správnom konaní v znení neskorších predpisov

### I. určuje

podľa ustanovenia § 39 ods. 3 zákona o lesoch

### lesný celok Čierny Váh.

Lesný celok tvoria pozemky nachádzajúce sa v obvode hraníc lesného celku. Obvodová hranica lesného celku je tvorená týmito čiastkovými líniami – spoločnými hranicami lesných celkov :

1. lesný celok Čierny Váh ↔ lesný celok Račková
2. lesný celok Čierny Váh ↔ k.ú. Štrba
3. lesný celok Čierny Váh ↔ lesný celok LPS Liptovská Teplička
4. lesný celok Čierny Váh ↔ lesný celok Lesy Benkovo štátne
5. lesný celok Čierny Váh ↔ lesný celok Javorinka
6. lesný celok Čierny Váh ↔ lesný celok Svarínka
7. lesný celok Čierny Váh ↔ lesný celok Kráľova Lehota

Súčasťou výrokovej časti rozhodnutia sú súradnice lomových bodov čiastkových línii tvoriacich obvodovú hranicu lesného celku, ktoré sú uvedené v prílohe tohto rozhodnutia.

### O d ô v o d n e n i e

Lesný celok (LC) bol určený z podnetu Okresného úradu Žilina. Konajúci orgán štátnej správy pri jeho určovaní zohľadnil plošný rozsah lesných pozemkov, spôsob ich užívania a polohu v príslušnom lesnom hospodárskom celku.

Lesný celok sa nachádza v okrese Liptovský Mikuláš a do lesného celku patria časti katastrálnych území : Východná, Važec.

Lesný celok vymedzuje územie v rámci ktorého sa pre lesné pozemky vedené v registri CKN príslušného katastrálneho územia vyhotoví program starostlivosti o lesy.

Orientačná výmera lesných pozemkov v lesnom celku je 6 874.7634 ha.

Vektorový súbor formát .shp obsahujúci línie obvodovej hranice lesného celku je k dispozícii na Okresnom úrade Žilina, odbore opravných prostriedkov.

**Poučenie:**

Proti tomuto rozhodnutiu sa možno odvolať v lehote 15 dní od dňa doručenia tohto rozhodnutia na Okresný úrad Žilina, odbor opravných prostriedkov, ul. Vysokoškolákov 8556/33B, 010 08 Žilina. Odvolanie nemá odkladný účinok.

Toto rozhodnutie je preskúmateľné súdom po vyčerpaní riadneho opravného prostriedku a po nadobudnutí jeho právoplatnosti.



JUDr. Adriana Běrešová  
vedúca odboru

**Rozdeľovník:**

Doručuje sa verejnou vyhláškou v zmysle § 67 ods.2 zákona o lesoch týmto účastníkom konania o určení lesného celku Čierny Váh:

Obhospodarovateľom lesných pozemkov podľa evidencie OÚ Liptovský Mikuláš, pozemkového a lesného odboru :

1. LESY Slovenskej republiky, štátny podnik organizačná zložka OZ Tatry, J. Martinku 110/6, 033 11 Liptovský Hrádok
2. Správa Národného parku Nízke Tatry so sídlom v Banskej Bystrici, IČO: 54435374, Partizánska cesta 3799/69, 974 01 Banská Bystrica
3. Urbár Vrbica, Pozemkové spoločenstvo, IČO: 17058058, 1. mája 95, 031 01 Liptovský Mikuláš
4. Urbár, pozemkové spoločenstvo Važec, IČO: 31936717, Š. Rysuľu 341, 032 61 Važec

Vlastníkom lesných pozemkov :

5. vlastníkom lesných pozemkov patriacich do lesného celku v k.ú. Východná,
6. vlastníkom lesných pozemkov patriacich do lesného celku v k.ú. Važec,

Správcomi lesného majetku štátu a zástupcami neznámych vlastníkov lesných pozemkov v okrem pozemkov vedených ako spoločná nehnuteľnosť :

7. LESY Slovenskej republiky, štátny podnik organizačná zložka OZ Tatry, J. Martinku 110/6, 033 11 Liptovský Hrádok

Správcomi podielov štátu a zástupcami neznámych vlastníkov lesných pozemkov tvoriacich spoločnú nehnuteľnosť :

8. SPF, Búdková 3555/36, 811 04 Bratislava

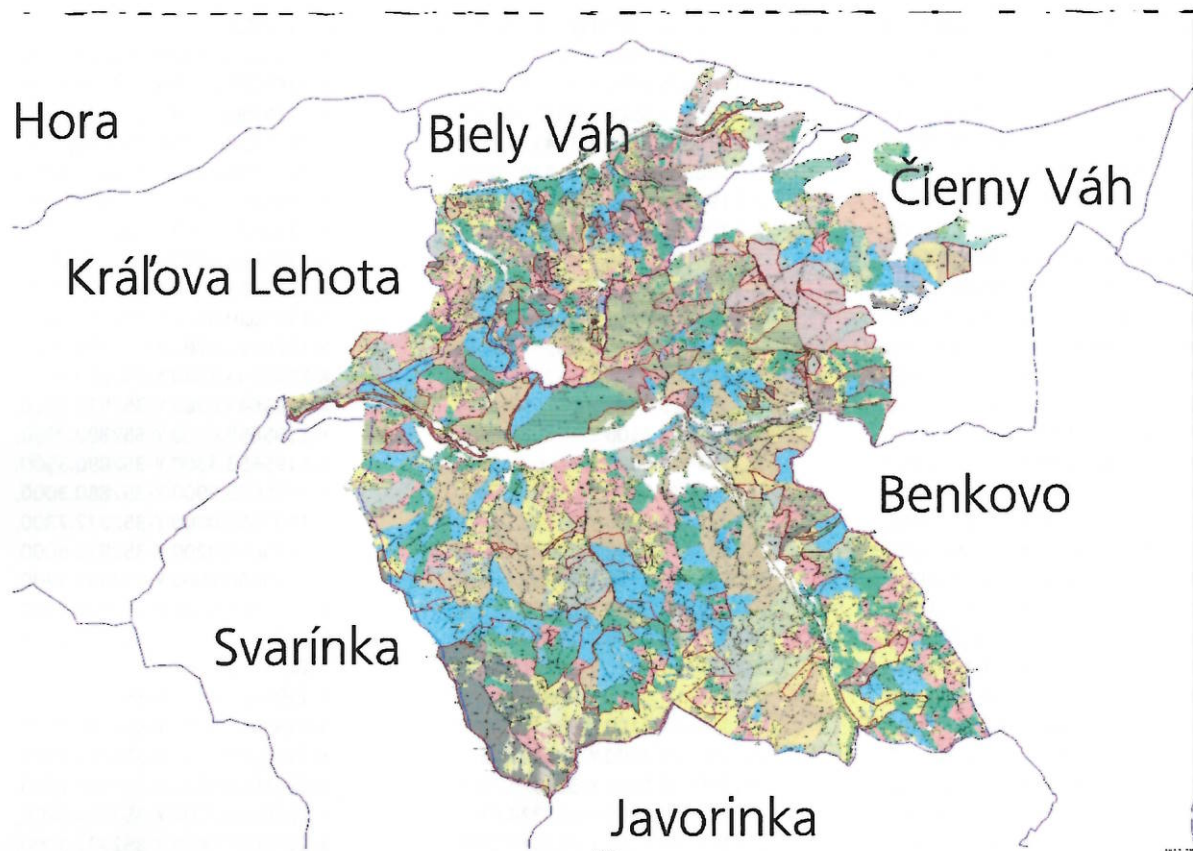
Za účelom zverejnenia :

1. OcÚ Východná, Východná 616, 032 32 Východná, IČO 00315893
2. OcÚ Važec, Na Harte 19, 032 61 Važec, IČO 00315842
3. Okresný úrad Liptovský Mikuláš, pozemkový a lesný odbor, Kollárova 2, 031 01 Liptovský Mikuláš
4. <https://www.minv.sk>

Na vedomie :

1. NLC – ústav HÚL, Sokolská 2, 960 52 Zvolen
2. NLC – ÚLZI, Sokolská 2, 960 52 Zvolen
3. Lesy SR š.p. Banská Bystrica odbor lesníckej politiky a certifikácie lesov, Ing. Peter Zima, Námestie SNP 8, 975 66 Banská Bystrica

Orientačné zobrazenie obvodovej hranice lesného celku Čierny Váh :



Príloha : súradnice lomových bodov línií tvoriacich hranicu lesného celku Čierny Váh  
(súradnicový systém : mínus JTSK \*súradnica X\*súradnica Y) :

spoločná hranica lesný celok Čierny Váh ↔ lesný celok Račková, 174 bodov

X-1195937.5200 Y-357117.5300,	X-1196439.1200 Y-354245.7800,	X-1195596.2100 Y-353120.2500,
X-1195948.0700 Y-357066.2600,	X-1196425.9500 Y-354221.1700,	X-1195596.4400 Y-353109.8900,
X-1195957.8900 Y-357016.2300,	X-1196419.0600 Y-354210.3500,	X-1195596.5700 Y-353108.9700,
X-1195966.2200 Y-356981.9300,	X-1196393.3700 Y-354173.7600,	X-1195598.0700 Y-353098.2200,
X-1195982.5500 Y-356904.9000,	X-1196369.9200 Y-354145.4300,	X-1195598.8200 Y-353092.8800,
X-1195993.7900 Y-356853.0400,	X-1196344.8100 Y-354119.8600,	X-1195601.0100 Y-353077.2000,
X-1196015.5400 Y-356785.7900,	X-1196323.9700 Y-354100.5400,	X-1195603.2200 Y-353061.3300,
X-1196030.7400 Y-356750.5400,	X-1196297.9700 Y-354078.7500,	X-1195616.8800 Y-353010.0000,
X-1196031.8300 Y-356748.1000,	X-1196206.7500 Y-354002.9200,	X-1195617.7900 Y-353007.7500,
X-1196034.0600 Y-356749.5100,	X-1196203.3600 Y-354000.1000,	X-1195620.6100 Y-352998.4600,
X-1196035.1700 Y-356747.7300,	X-1196050.8100 Y-353874.5300,	X-1195622.5900 Y-352991.9500,
X-1196033.7900 Y-356746.9300,	X-1195909.6700 Y-353758.5400,	X-1195644.5600 Y-352919.5700,
X-1196034.7000 Y-356745.1200,	X-1195819.1400 Y-353683.0500,	X-1195647.0200 Y-352911.4800,
X-1196037.2500 Y-356740.0500,	X-1195816.3100 Y-353680.6900,	X-1195652.6900 Y-352892.7900,
X-1196049.2100 Y-356717.6100,	X-1195809.6800 Y-353675.1600,	X-1195653.3300 Y-352890.3500,
X-1196074.2100 Y-356681.6500,	X-1195803.0800 Y-353669.6500,	X-1195655.9900 Y-352880.3000,
X-1196108.7300 Y-356635.7700,	X-1195768.4900 Y-353630.9300,	X-1195658.0000 Y-352872.7300,
X-1196148.5200 Y-356586.3600,	X-1195749.8300 Y-353611.3600,	X-1195658.0200 Y-352872.6000,
X-1196174.8600 Y-356543.0700,	X-1195729.2500 Y-353587.3500,	X-1195660.6600 Y-352858.1700,
X-1196189.6200 Y-356510.0100,	X-1195708.2900 Y-353560.1200,	X-1195662.4200 Y-352848.5400,
X-1196201.2000 Y-356474.6700,	X-1195684.4300 Y-353522.4200,	X-1195664.1400 Y-352839.1400,
X-1196211.2400 Y-356419.9700,	X-1195680.0800 Y-353515.1300,	X-1195665.1000 Y-352833.9000,
X-1196232.1000 Y-356258.6000,	X-1195654.8500 Y-353467.5900,	X-1195668.4500 Y-352797.9500,
X-1196280.9500 Y-355870.0400,	X-1195634.0100 Y-353419.0800,	X-1195669.5500 Y-352786.1000,
X-1196287.1300 Y-355778.9100,	X-1195624.8800 Y-353392.8500,	X-1195669.5200 Y-352785.0100,
X-1196291.9000 Y-355692.3700,	X-1195620.1600 Y-353379.3000,	X-1195668.9300 Y-352764.1000,
X-1196300.0500 Y-355582.7300,	X-1195619.8800 Y-353374.9600,	X-1195668.2900 Y-352754.8800,
X-1196304.1300 Y-355542.2600,	X-1195626.7500 Y-353374.6500,	X-1195667.0800 Y-352737.3900,
X-1196313.4700 Y-355489.1100,	X-1195625.0100 Y-353369.8300,	X-1195666.7600 Y-352732.7100,
X-1196325.4900 Y-355447.2400,	X-1195620.8600 Y-353370.0100,	X-1195661.8200 Y-352704.2400,
X-1196342.3300 Y-355400.0900,	X-1195621.0200 Y-353369.6400,	X-1195655.4200 Y-352674.2900,
X-1196353.4800 Y-355376.4300,	X-1195618.2600 Y-353369.5600,	X-1195641.2700 Y-352632.5300,
X-1196360.3300 Y-355361.8900,	X-1195618.0800 Y-353369.6400,	X-1195541.8400 Y-352405.1300,
X-1196377.6500 Y-355330.7800,	X-1195616.6300 Y-353368.9800,	X-1195476.4500 Y-352259.9400,
X-1196451.0200 Y-355198.2400,	X-1195614.9500 Y-353362.3900,	X-1195375.1200 Y-352032.9700,
X-1196509.8200 Y-355081.7200,	X-1195614.7100 Y-353361.4700,	X-1195293.9500 Y-351849.9100,
X-1196524.8100 Y-355037.3600,	X-1195611.8200 Y-353345.6100,	X-1195259.0000 Y-351772.3700,
X-1196529.3900 Y-355016.9400,	X-1195611.0400 Y-353341.0600,	X-1195213.6900 Y-351668.8200,
X-1196548.0100 Y-354926.1500,	X-1195610.4500 Y-353338.3500,	X-1195188.0500 Y-351611.3000,
X-1196555.4500 Y-354882.3600,	X-1195603.9900 Y-353308.8100,	X-1195161.5400 Y-351551.1200,
X-1196561.5000 Y-354834.4700,	X-1195602.3800 Y-353301.4400,	X-1195146.1700 Y-351507.8600,
X-1196564.2200 Y-354798.2800,	X-1195601.5500 Y-353294.7100,	X-1195132.8700 Y-351469.9500,
X-1196565.6100 Y-354760.3800,	X-1195598.8700 Y-353273.0700,	X-1195130.5900 Y-351462.1700,
X-1196565.5200 Y-354715.9200,	X-1195598.5500 Y-353268.5600,	X-1195119.0900 Y-351411.7600,
X-1196563.5400 Y-354668.7500,	X-1195598.0400 Y-353261.3700,	X-1195119.0600 Y-351411.7000,
X-1196560.1600 Y-354632.2600,	X-1195597.5200 Y-353254.1300,	X-1195117.2400 Y-351408.3500,
X-1196553.7300 Y-354587.3400,	X-1195595.9300 Y-353231.9900,	X-1195117.2333 Y-351408.2985,
X-1196550.1900 Y-354566.9800,	X-1195595.5800 Y-353227.0400,	X-1195116.1300 Y-351399.7700,
X-1196549.3700 Y-354562.2500,	X-1195595.4000 Y-353209.5400,	X-1195113.5500 Y-351396.1000,
X-1196545.5700 Y-354540.4200,	X-1195595.3500 Y-353205.1000,	X-1195112.8400 Y-351391.7900,
X-1196535.2600 Y-354495.7000,	X-1195595.2100 Y-353191.6000,	X-1195104.2700 Y-351340.1400,
X-1196521.0900 Y-354444.5800,	X-1195595.1500 Y-353185.2300,	X-1195092.4000 Y-351275.2200,
X-1196513.4500 Y-354424.6200,	X-1195595.0800 Y-353178.8500,	X-1195073.5100 Y-351172.2000,
X-1196497.0700 Y-354376.9700,	X-1195595.0200 Y-353173.2900,	X-1195050.7200 Y-351037.5600,
X-1196486.5200 Y-354351.9100,	X-1195595.0400 Y-353172.4900,	X-1195019.2300 Y-350855.1900,
X-1196467.4700 Y-354307.1800,	X-1195595.2200 Y-353164.2500,	X-1194993.4200 Y-350703.9400,
X-1196462.6700 Y-354295.9100,	X-1195595.3800 Y-353157.1000,	X-1194957.3300 Y-350497.9600,
X-1196450.5200 Y-354268.6100,	X-1195595.7400 Y-353141.0800,	X-1195935.2362 Y-357136.9508,



spoločná hranica lesný celok Čierny Váh ↔ k.ú. Štrba, 156 bodov

X-1198472.8100 Y-351298.7700,	X-1195598.3000 Y-351046.6800,	X-1197506.7600 Y-350932.6900,
X-1194962.9600 Y-350497.7400,	X-1195603.0900 Y-351062.1500,	X-1197564.6900 Y-350990.5500,
X-1194968.1300 Y-350498.0000,	X-1195620.9400 Y-351093.0900,	X-1197570.6300 Y-351019.2400,
X-1194980.5900 Y-350498.6300,	X-1195623.1700 Y-351117.7500,	X-1197603.4600 Y-351047.7200,
X-1195000.0000 Y-350515.8500,	X-1195602.3900 Y-351139.7900,	X-1197660.6400 Y-351107.8300,
X-1195041.8200 Y-350552.9400,	X-1195606.3900 Y-351148.7800,	X-1197689.9800 Y-351126.8200,
X-1195074.2200 Y-350573.7000,	X-1195597.7600 Y-351161.2100,	X-1197704.3100 Y-351132.6000,
X-1195125.5500 Y-350590.8400,	X-1195604.6300 Y-351180.1000,	X-1197707.3700 Y-351146.8000,
X-1195125.7400 Y-350593.6100,	X-1195624.2100 Y-351177.0800,	X-1197717.3400 Y-351137.4500,
X-1195137.7000 Y-350590.5900,	X-1195644.0300 Y-351165.6300,	X-1197734.2900 Y-351138.0300,
X-1195160.1600 Y-350613.0500,	X-1195654.1900 Y-351178.5100,	X-1197752.3000 Y-351145.3800,
X-1195181.9500 Y-350611.8600,	X-1195649.7000 Y-351202.7200,	X-1197766.6000 Y-351163.1400,
X-1195260.8600 Y-350666.3100,	X-1195636.6800 Y-351232.7900,	X-1197780.8700 Y-351161.8200,
X-1195299.2600 Y-350713.6200,	X-1195646.1200 Y-351259.7000,	X-1197794.1100 Y-351172.2800,
X-1195309.9400 Y-350716.3300,	X-1195666.7000 Y-351261.7400,	X-1197862.6800 Y-351176.1200,
X-1195315.3400 Y-350717.7100,	X-1195678.9900 Y-351275.0100,	X-1197884.3100 Y-351180.8700,
X-1195326.2200 Y-350720.4700,	X-1195658.9900 Y-351309.4800,	X-1197901.5000 Y-351194.9400,
X-1195361.9100 Y-350746.0500,	X-1195670.5900 Y-351322.5600,	X-1197915.6900 Y-351195.1600,
X-1195399.0900 Y-350769.7400,	X-1195702.5400 Y-351333.5800,	X-1197920.7800 Y-351206.9800,
X-1195408.3100 Y-350775.0500,	X-1195711.2500 Y-351331.5500,	X-1197931.3500 Y-351209.9100,
X-1195440.4100 Y-350781.4100,	X-1195730.2100 Y-351323.3400,	X-1197938.7600 Y-351206.6700,
X-1195475.4200 Y-350790.0700,	X-1195783.0800 Y-351316.9700,	X-1197947.5700 Y-351222.7000,
X-1195501.6900 Y-350781.5000,	X-1195783.4500 Y-351316.9300,	X-1197959.8300 Y-351222.1000,
X-1195514.7700 Y-350786.6600,	X-1195788.5700 Y-351316.3100,	X-1197967.4400 Y-351240.6500,
X-1195532.8300 Y-350787.0400,	X-1195848.5400 Y-351309.0800,	X-1197990.6800 Y-351236.4300,
X-1195550.9400 Y-350787.5400,	X-1195853.2700 Y-351308.5100,	X-1197997.5000 Y-351244.1300,
X-1195596.0600 Y-350789.8700,	X-1195853.4600 Y-351308.4900,	X-1197992.5000 Y-351265.4600,
X-1195599.7400 Y-350789.9400,	X-1195990.1900 Y-351292.0200,	X-1198015.2300 Y-351259.9400,
X-1195597.1700 Y-350828.3100,	X-1196050.6400 Y-351303.4900,	X-1198020.0700 Y-351262.0300,
X-1195620.2200 Y-350861.1200,	X-1196144.7700 Y-351275.3200,	X-1198018.8500 Y-351277.3600,
X-1195634.9500 Y-350861.3100,	X-1196186.8500 Y-351250.0000,	X-1198023.0600 Y-351282.2000,
X-1195648.4900 Y-350858.5000,	X-1196256.5400 Y-351208.0600,	X-1198034.8400 Y-351278.4200,
X-1195653.7600 Y-350861.2200,	X-1196317.0900 Y-351117.4500,	X-1198035.6600 Y-351286.3200,
X-1195658.5900 Y-350871.1700,	X-1196440.6000 Y-351030.1100,	X-1198048.9400 Y-351294.5600,
X-1195643.7700 Y-350889.2600,	X-1196462.9100 Y-350986.8900,	X-1198049.4400 Y-351313.5000,
X-1195644.3200 Y-350907.4000,	X-1196485.2900 Y-350982.6400,	X-1198053.5700 Y-351322.0600,
X-1195656.3400 Y-350920.7800,	X-1196669.7600 Y-350963.4000,	X-1198068.6200 Y-351327.2200,
X-1195658.3600 Y-350935.7700,	X-1196826.0100 Y-350944.7700,	X-1198070.4300 Y-351344.1100,
X-1195660.7000 Y-350949.9300,	X-1196827.5400 Y-350944.2900,	X-1198076.0300 Y-351344.4300,
X-1195657.3700 Y-350954.2000,	X-1196831.9900 Y-350942.9000,	X-1198083.7300 Y-351327.1000,
X-1195654.3800 Y-350955.5500,	X-1196833.8500 Y-350942.3200,	X-1198101.8500 Y-351330.0000,
X-1195649.2800 Y-350952.3900,	X-1196813.1100 Y-350863.5300,	X-1198108.3600 Y-351361.7400,
X-1195636.8000 Y-350940.6600,	X-1196810.0500 Y-350851.9000,	X-1198117.5400 Y-351353.0100,
X-1195629.4000 Y-350945.1900,	X-1197000.0000 Y-350852.0800,	X-1198131.0500 Y-351359.8600,
X-1195630.4100 Y-350975.7600,	X-1197063.4600 Y-350852.1400,	X-1198238.5500 Y-351206.0900,
X-1195631.0600 Y-350997.7700,	X-1197110.4700 Y-350856.8800,	X-1198324.3900 Y-351291.4500,
X-1195662.6100 Y-351028.7100,	X-1197167.4100 Y-350869.0600,	X-1198407.5000 Y-351317.5500,
X-1195665.1400 Y-351033.9700,	X-1197205.0100 Y-350865.5200,	X-1198436.7300 Y-351282.3300,
X-1195659.8900 Y-351055.9900,	X-1197302.5500 Y-350886.1600,	X-1198454.5200 Y-351287.5000,
X-1195630.2300 Y-351046.1500,	X-1197356.3800 Y-350875.0300,	X-1198470.4400 Y-351298.7000,
X-1195614.2400 Y-351038.2800,	X-1197435.1000 Y-350882.5400,	X-1194957.3300 Y-350497.9600,
X-1195603.2800 Y-351037.7800,	X-1197461.6100 Y-350917.0900,	X-1198473.4800 Y-351298.7900,

spoločná hranica lesný celok Čierny Váh ↔ lesný celok LPS Liptovská Teplica, 176 bodov

X-1198473.4800 Y-351298.7900,	X-1198452.6100 Y-351502.4000,	X-1198440.3100 Y-351658.2000,
X-1198473.8500 Y-351403.9300,	X-1198440.9800 Y-351568.4300,	X-1198433.4400 Y-351757.0600,

X-1198453.6900 Y-351856.5800,  
X-1198466.8400 Y-351892.7700,  
X-1198500.9800 Y-351952.3800,  
X-1198503.1100 Y-352009.0000,  
X-1198507.8400 Y-352043.9600,  
X-1198503.2300 Y-352146.9800,  
X-1198519.4900 Y-352188.8200,  
X-1198560.9900 Y-352247.8800,  
X-1198565.9100 Y-352264.7000,  
X-1198570.8800 Y-352281.6900,  
X-1198589.4300 Y-352308.0000,  
X-1198619.6900 Y-352334.5400,  
X-1198626.4600 Y-352349.5800,  
X-1198626.9500 Y-352372.2700,  
X-1198646.1600 Y-352367.0000,  
X-1198678.8800 Y-352346.3300,  
X-1198707.6400 Y-352346.5800,  
X-1198708.1200 Y-352350.8400,  
X-1198710.3763 Y-352370.9234,  
X-1198710.7500 Y-352374.2500,  
X-1198712.7100 Y-352382.7600,  
X-1198742.2500 Y-352374.2500,  
X-1198742.3915 Y-352378.6614,  
X-1198743.0845 Y-352400.2573,  
X-1198743.7500 Y-352421.0000,  
X-1198735.2500 Y-352465.2500,  
X-1198746.2500 Y-352525.0000,  
X-1198750.2500 Y-352545.2500,  
X-1198768.2500 Y-352607.5000,  
X-1198789.2500 Y-352633.0000,  
X-1198841.0000 Y-352695.2500,  
X-1198857.2500 Y-352716.0000,  
X-1198896.0000 Y-352759.5000,  
X-1198932.7500 Y-352810.5000,  
X-1198939.7500 Y-352897.0000,  
X-1198925.2500 Y-352941.0000,  
X-1198912.5481 Y-352978.6235,  
X-1199152.0448 Y-352977.9599,  
X-1199241.2913 Y-352975.7111,  
X-1199287.8536 Y-352978.5050,  
X-1199303.7622 Y-353041.4439,  
X-1199314.5597 Y-353096.0000,  
X-1199329.9036 Y-353139.1902,  
X-1199352.0670 Y-353205.1121,  
X-1199376.9566 Y-353264.0761,  
X-1199393.5523 Y-353297.7438,  
X-1199416.1800 Y-353339.1300,  
X-1199432.0100 Y-353358.3900,  
X-1199448.4800 Y-353376.6800,  
X-1199493.3500 Y-353413.9300,  
X-1199521.7733 Y-353438.7966,  
X-1199521.8000 Y-353438.8200,  
X-1199530.9000 Y-353457.6200,  
X-1199551.5600 Y-353500.5000,  
X-1199562.9500 Y-353524.2100,  
X-1199569.6000 Y-353529.8000,  
X-1199585.7700 Y-353542.3300,

X-1199610.4100 Y-353552.1100,  
X-1199628.1900 Y-353558.6300,  
X-1199633.1800 Y-353558.0300,  
X-1199659.3000 Y-353551.4300,  
X-1199720.4700 Y-353535.8100,  
X-1199750.5300 Y-353540.6300,  
X-1199795.8700 Y-353545.8000,  
X-1199828.1300 Y-353581.4900,  
X-1199833.1600 Y-353606.6300,  
X-1199842.6000 Y-353657.1800,  
X-1199859.9200 Y-353692.1900,  
X-1199857.5900 Y-353717.2100,  
X-1199849.5900 Y-353801.0300,  
X-1199866.1000 Y-353808.2700,  
X-1199872.8700 Y-353809.8300,  
X-1199898.0200 Y-353808.7800,  
X-1199957.5400 Y-353805.5600,  
X-1199957.5400 Y-353796.4600,  
X-1199954.6200 Y-353768.1800,  
X-1199950.5100 Y-353729.9900,  
X-1199942.3000 Y-353653.5400,  
X-1199958.5600 Y-353652.9000,  
X-1199967.0200 Y-353641.2200,  
X-1199977.1000 Y-353624.7900,  
X-1200000.0000 Y-353617.4000,  
X-1200001.4800 Y-353623.0300,  
X-1200013.2900 Y-353680.6000,  
X-1200027.9000 Y-353709.8100,  
X-1200028.6200 Y-353710.7000,  
X-1200050.7600 Y-353703.2100,  
X-1200060.1600 Y-353717.4300,  
X-1200158.2400 Y-353725.0100,  
X-1200195.5000 Y-353727.8000,  
X-1200194.2700 Y-353667.6900,  
X-1200194.0600 Y-353649.3200,  
X-1200216.4100 Y-353645.2500,  
X-1200246.0000 Y-353639.6600,  
X-1200293.9200 Y-353642.2000,  
X-1200349.2500 Y-353633.4800,  
X-1200370.8400 Y-353653.5500,  
X-1200386.8400 Y-353669.6800,  
X-1200378.8800 Y-353713.9600,  
X-1200361.7800 Y-353727.9300,  
X-1200335.1500 Y-353750.4900,  
X-1200312.5900 Y-353768.1500,  
X-1200313.0600 Y-353774.6200,  
X-1200320.8900 Y-353821.3600,  
X-1200300.3100 Y-353884.8200,  
X-1200294.4300 Y-353897.4800,  
X-1200287.6100 Y-353911.1900,  
X-1200286.6800 Y-353961.6100,  
X-1200285.8800 Y-353964.9600,  
X-1200274.3600 Y-353989.6800,  
X-1200249.0900 Y-353989.8900,  
X-1200235.9700 Y-354061.6000,  
X-1200243.5400 Y-354128.7500,  
X-1200296.0800 Y-354133.1100,

X-1200298.2800 Y-354127.2200,  
X-1200317.7100 Y-354057.3700,  
X-1200329.9000 Y-354057.7100,  
X-1200351.6200 Y-353999.7600,  
X-1200370.0800 Y-354001.9600,  
X-1200389.1700 Y-354062.6600,  
X-1200401.0200 Y-354080.7800,  
X-1200448.1000 Y-354085.4000,  
X-1200491.7900 Y-354105.7600,  
X-1200561.0500 Y-354137.3100,  
X-1200597.9600 Y-354173.7000,  
X-1200654.3900 Y-354216.2900,  
X-1200658.5400 Y-354217.4300,  
X-1200709.7600 Y-354220.4400,  
X-1200754.8500 Y-354223.5700,  
X-1200777.0700 Y-354228.4000,  
X-1200790.4900 Y-354231.3200,  
X-1200827.9800 Y-354234.9800,  
X-1200953.5600 Y-354242.2400,  
X-1200963.7200 Y-354242.6200,  
X-1200998.2200 Y-354242.7100,  
X-1201046.5628 Y-354242.5338,  
X-1201080.5200 Y-354242.4100,  
X-1201088.7300 Y-354242.5400,  
X-1201117.8100 Y-354241.1800,  
X-1201178.8600 Y-354238.1400,  
X-1201214.8000 Y-354236.3600,  
X-1201219.7500 Y-354236.2300,  
X-1201313.2200 Y-354234.0300,  
X-1201312.5100 Y-354218.4500,  
X-1201313.4800 Y-354198.4300,  
X-1201315.7600 Y-354180.3500,  
X-1201318.1800 Y-354170.9900,  
X-1201320.7600 Y-354159.8600,  
X-1201324.9293 Y-354150.7589,  
X-1201373.8425 Y-354189.9675,  
X-1201410.4440 Y-354213.9764,  
X-1201436.3274 Y-354230.9956,  
X-1201470.0114 Y-354264.3249,  
X-1201487.0306 Y-354276.3802,  
X-1201509.0138 Y-354290.5629,  
X-1201539.8510 Y-354313.4910,  
X-1201577.6130 Y-354321.1150,  
X-1201630.2770 Y-354333.6500,  
X-1201677.8860 Y-354345.8440,  
X-1201723.2360 Y-354362.5730,  
X-1201778.6170 Y-354381.1510,  
X-1201803.0770 Y-354394.9080,  
X-1201829.7380 Y-354410.7670,  
X-1201883.2270 Y-354428.4360,  
X-1201918.3950 Y-354439.7910,  
X-1201948.7779 Y-354453.0435,  
X-1201969.2360 Y-354461.9670,  
X-1202002.6910 Y-354475.5510,  
X-1202028.9621 Y-354487.7940,  
X-1202037.4384 Y-354491.9796,

spoločná hranica lesný celok Čierny Váh ↔ lesný celok Lesy Benkovo štátne, 130 bodov

X-1202037.4384 Y-354491.9796,  
X-1202035.2500 Y-354502.3500,  
X-1202008.3000 Y-354537.3500,  
X-1202000.0000 Y-354540.5000,

X-1201982.5100 Y-354549.6000,  
X-1201958.2000 Y-354557.8800,  
X-1201926.5700 Y-354559.3100,  
X-1201907.0500 Y-354559.3500,

X-1201873.2200 Y-354560.5500,  
X-1201862.8300 Y-354565.3300,  
X-1201824.6300 Y-354607.1300,  
X-1201818.4000 Y-354611.1800,

X-1201773.0400 Y-354631.9900,  
X-1201723.5800 Y-354661.0300,  
X-1201718.0300 Y-354662.3500,  
X-1201683.7800 Y-354668.3200,  
X-1201663.9800 Y-354675.9200,  
X-1201649.9800 Y-354692.1300,  
X-1201636.3500 Y-354716.8400,  
X-1201610.2300 Y-354773.4000,  
X-1201608.0300 Y-354794.2500,  
X-1201602.6000 Y-354883.6000,  
X-1201611.8000 Y-354965.9200,  
X-1201611.8800 Y-355000.0000,  
X-1201608.3500 Y-355014.1400,  
X-1201602.1000 Y-355034.1800,  
X-1201589.9600 Y-355058.3200,  
X-1201579.7700 Y-355074.0400,  
X-1201572.4500 Y-355083.8500,  
X-1201554.9700 Y-355092.3800,  
X-1201508.7300 Y-355103.8600,  
X-1201502.9000 Y-355110.3500,  
X-1201498.1500 Y-355123.3100,  
X-1201498.5900 Y-355148.5600,  
X-1201500.3300 Y-355181.1900,  
X-1201511.8000 Y-355278.4300,  
X-1201513.1700 Y-355323.8200,  
X-1201510.1300 Y-355358.8500,  
X-1201503.6100 Y-355378.4600,  
X-1201513.5200 Y-355377.2200,  
X-1201536.6400 Y-355374.3300,  
X-1201556.8900 Y-355370.3800,  
X-1201562.1500 Y-355369.3600,  
X-1201564.2700 Y-355368.9400,  
X-1201566.4900 Y-355368.5100,  
X-1201566.8800 Y-355368.4300,  
X-1201575.9300 Y-355366.6700,  
X-1201590.4400 Y-355363.8400,  
X-1201619.6900 Y-355361.1600,  
X-1201642.4700 Y-355358.4800,  
X-1201646.8100 Y-355356.6100,  
X-1201652.2900 Y-355354.2400,

X-1201656.4800 Y-355357.9000,  
X-1201702.3000 Y-355398.0000,  
X-1201714.3600 Y-355404.7000,  
X-1201747.1800 Y-355392.4200,  
X-1201788.2600 Y-355411.3900,  
X-1201808.5700 Y-355423.6700,  
X-1201836.0300 Y-355427.0200,  
X-1201826.4300 Y-355436.6200,  
X-1201992.3200 Y-355475.0200,  
X-1202064.4300 Y-355548.9200,  
X-1202185.2200 Y-355569.2700,  
X-1202216.2500 Y-355737.5800,  
X-1202223.8400 Y-355769.9600,  
X-1202226.0800 Y-355807.2400,  
X-1202238.1300 Y-355817.0600,  
X-1202238.5800 Y-355824.2100,  
X-1202313.6000 Y-355834.0300,  
X-1202475.6900 Y-355788.0400,  
X-1202614.8100 Y-355788.6800,  
X-1202621.9200 Y-355788.7100,  
X-1202631.1300 Y-355775.8200,  
X-1202667.2500 Y-355725.3000,  
X-1202670.2300 Y-355716.0600,  
X-1202734.2300 Y-355517.2200,  
X-1202783.5700 Y-355314.9400,  
X-1202887.3800 Y-355277.6600,  
X-1202994.5500 Y-355216.9300,  
X-1203083.8600 Y-355070.2500,  
X-1203165.9700 Y-355010.4000,  
X-1203186.7800 Y-354995.2300,  
X-1203192.7300 Y-354992.6100,  
X-1203371.0100 Y-354913.9900,  
X-1203385.2600 Y-354907.7100,  
X-1203398.2100 Y-354823.0900,  
X-1203407.5900 Y-354768.1700,  
X-1203412.0500 Y-354733.9900,  
X-1203416.1900 Y-354702.3200,  
X-1203420.2900 Y-354621.5800,  
X-1203422.4900 Y-354565.2300,  
X-1203544.9300 Y-354494.7900,

X-1203701.7300 Y-354271.2300,  
X-1203708.0000 Y-354262.2900,  
X-1203771.5400 Y-354218.9100,  
X-1203811.1900 Y-354107.1700,  
X-1203815.2800 Y-354095.6500,  
X-1204063.3000 Y-353993.4900,  
X-1204070.3800 Y-353990.5800,  
X-1204084.8300 Y-353980.3900,  
X-1204142.6900 Y-353941.9300,  
X-1204203.0700 Y-353872.8800,  
X-1204257.5400 Y-353788.8000,  
X-1204260.1800 Y-353784.7300,  
X-1204457.2600 Y-353711.9700,  
X-1204463.6000 Y-353709.6300,  
X-1204543.5300 Y-353705.0800,  
X-1204626.4700 Y-353731.7800,  
X-1204724.2000 Y-353705.3000,  
X-1204791.4600 Y-353652.4300,  
X-1204958.1000 Y-353441.3400,  
X-1205108.2000 Y-353363.9900,  
X-1205115.4500 Y-353360.2600,  
X-1205176.5000 Y-353328.8000,  
X-1205181.9500 Y-353325.9900,  
X-1205201.8500 Y-353300.3900,  
X-1205205.5300 Y-353295.6500,  
X-1205242.9200 Y-353247.5600,  
X-1205314.8800 Y-353212.4000,  
X-1205429.7200 Y-353132.2500,  
X-1205579.8000 Y-353027.7000,  
X-1205586.9700 Y-353022.7100,  
X-1205706.7300 Y-353003.0800,  
X-1205984.1200 Y-352995.0400,  
X-1206026.4400 Y-352993.6200,  
X-1206168.1800 Y-352911.9600,  
X-1206442.4300 Y-352746.4900,  
X-1206446.2900 Y-352744.1600,  
X-1206450.8500 Y-352741.4100,  
X-1206615.2900 Y-352674.1500,

spoločná hranica lesný celok Čierny Váh ↔ lesný celok Javorinka, 348 bodov

X-1207922.5600 Y-359682.0400,  
X-1207886.7800 Y-359641.7900,  
X-1207869.6900 Y-359622.6100,  
X-1207816.4900 Y-359605.4600,  
X-1207803.2600 Y-359603.7400,  
X-1207782.3800 Y-359511.9100,  
X-1207749.5300 Y-359512.3100,  
X-1207752.4900 Y-359480.1900,  
X-1207780.7899 Y-359417.1175,  
X-1207812.6500 Y-359346.1100,  
X-1207801.4200 Y-359343.9100,  
X-1207777.0300 Y-359339.1500,  
X-1207727.1000 Y-359354.5400,  
X-1207681.9600 Y-359310.0700,  
X-1207645.5600 Y-359331.6400,  
X-1207544.7200 Y-359310.2100,  
X-1207529.1700 Y-359334.0700,  
X-1207504.7000 Y-359324.9600,  
X-1207496.9100 Y-359336.6400,  
X-1207495.9800 Y-359338.1000,  
X-1207435.1700 Y-359315.8700,

X-1207427.4000 Y-359330.2100,  
X-1207398.3500 Y-359307.0900,  
X-1207410.2800 Y-359270.2300,  
X-1207433.7200 Y-359243.9900,  
X-1207420.4300 Y-359174.9700,  
X-1207418.0400 Y-359160.8500,  
X-1207381.2300 Y-359166.6300,  
X-1207366.6100 Y-359160.7300,  
X-1207343.5700 Y-359124.0400,  
X-1207326.9600 Y-359078.3800,  
X-1207330.9800 Y-359043.8100,  
X-1207345.4600 Y-359037.9100,  
X-1207371.2900 Y-359032.0200,  
X-1207426.6600 Y-359076.8900,  
X-1207432.6900 Y-359049.7100,  
X-1207432.0900 Y-359028.5800,  
X-1207421.5000 Y-359009.8100,  
X-1207408.5200 Y-359009.3200,  
X-1207413.7500 Y-358983.7200,  
X-1207448.8100 Y-358981.8500,  
X-1207520.1829 Y-358921.2598,

X-1207532.4100 Y-358910.8800,  
X-1207507.7400 Y-358853.1200,  
X-1207504.1465 Y-358844.6028,  
X-1207498.4200 Y-358831.0300,  
X-1207469.0842 Y-358844.7505,  
X-1207468.2117 Y-358845.1586,  
X-1207438.0400 Y-358859.2700,  
X-1207364.8800 Y-358886.2100,  
X-1207350.1900 Y-358895.6900,  
X-1207267.0200 Y-358952.3500,  
X-1207251.2344 Y-358963.2292,  
X-1207237.7100 Y-358972.5500,  
X-1207206.1600 Y-358986.5800,  
X-1207118.4900 Y-359063.7600,  
X-1207110.4300 Y-359071.6010,  
X-1207098.9900 Y-359082.7300,  
X-1207096.7607 Y-359084.5751,  
X-1207072.6216 Y-359104.5543,  
X-1207012.7600 Y-359154.1000,  
X-1206982.6318 Y-359174.2326,  
X-1206968.0600 Y-359183.9700,

X-1206978.7800 Y-359204.4700,  
X-1206984.6149 Y-359215.9214,  
X-1206964.1593 Y-359225.1411,  
X-1206934.6397 Y-359204.0947,  
X-1206907.4734 Y-359204.3896,  
X-1206891.8835 Y-359204.5588,  
X-1206883.4200 Y-359205.1000,  
X-1206891.5900 Y-359175.9100,  
X-1206878.6900 Y-359172.2300,  
X-1206874.7400 Y-359184.8500,  
X-1206796.3400 Y-359165.1300,  
X-1206792.3900 Y-359133.3100,  
X-1206773.1300 Y-359123.8500,  
X-1206754.9637 Y-359062.2037,  
X-1206744.3150 Y-359026.0680,  
X-1206737.3125 Y-359007.4665,  
X-1206724.4039 Y-358973.1758,  
X-1206713.5835 Y-358944.4321,  
X-1206683.6625 Y-358906.6971,  
X-1206677.2712 Y-358898.6367,  
X-1206669.4333 Y-358888.7518,  
X-1206670.2514 Y-358887.1156,  
X-1206672.7878 Y-358836.6721,  
X-1206673.8870 Y-358814.8113,  
X-1206675.8454 Y-358775.8633,  
X-1206676.8053 Y-358756.7723,  
X-1206686.0125 Y-358573.4203,  
X-1206686.2487 Y-358568.7170,  
X-1206687.4394 Y-358545.0057,  
X-1206688.2245 Y-358529.3709,  
X-1206689.2459 Y-358509.0299,  
X-1206690.5594 Y-358482.8736,  
X-1206691.5682 Y-358462.7835,  
X-1206692.4808 Y-358444.6103,  
X-1206683.5900 Y-358416.7600,  
X-1206691.3058 Y-358401.2323,  
X-1206687.5805 Y-358371.5902,  
X-1206654.5912 Y-358333.8025,  
X-1206651.2499 Y-358329.9752,  
X-1206648.2252 Y-358326.5105,  
X-1206642.7008 Y-358320.1826,  
X-1206626.0737 Y-358285.2230,  
X-1206593.4540 Y-358216.6380,  
X-1206588.8922 Y-358207.0465,  
X-1206581.4822 Y-358191.4664,  
X-1206579.0533 Y-358186.3595,  
X-1206564.5952 Y-358124.3102,  
X-1206560.7335 Y-358107.7373,  
X-1206559.4694 Y-358102.3121,  
X-1206559.2015 Y-358095.8829,  
X-1206558.6534 Y-358082.7283,  
X-1206557.0214 Y-358023.1607,  
X-1206554.9146 Y-358000.2532,  
X-1206553.7236 Y-357987.3044,  
X-1206550.9200 Y-357985.3050,  
X-1206542.3290 Y-357974.2880,  
X-1206529.4050 Y-357952.6040,  
X-1206515.1650 Y-357917.3750,  
X-1206509.5210 Y-357898.9310,  
X-1206509.3308 Y-357898.7759,  
X-1206506.6050 Y-357896.5600,  
X-1206500.4140 Y-357888.7520,  
X-1206490.3270 Y-357881.1450,

X-1206482.7890 Y-357876.1060,  
X-1206483.5200 Y-357872.6640,  
X-1206465.3342 Y-357868.7015,  
X-1206437.7505 Y-357855.3276,  
X-1206412.5453 Y-357843.1069,  
X-1206406.3773 Y-357836.3221,  
X-1206391.2164 Y-357819.6451,  
X-1206358.7542 Y-357809.7825,  
X-1206327.0759 Y-357801.8836,  
X-1206297.2760 Y-357794.4530,  
X-1206288.9390 Y-357792.9840,  
X-1206275.5849 Y-357786.8444,  
X-1206271.1108 Y-357785.2785,  
X-1206243.5776 Y-357775.6418,  
X-1206228.4394 Y-357765.3552,  
X-1206209.6311 Y-357748.0981,  
X-1206189.9412 Y-357736.1619,  
X-1206180.8062 Y-357730.3908,  
X-1206168.4168 Y-357722.5637,  
X-1206130.2294 Y-357707.8424,  
X-1206110.8221 Y-357703.2285,  
X-1206106.1676 Y-357702.1219,  
X-1206082.9970 Y-357698.5242,  
X-1206089.2256 Y-357683.2897,  
X-1206090.9605 Y-357679.0464,  
X-1206105.1753 Y-357656.9911,  
X-1206147.5155 Y-357594.3435,  
X-1206166.0470 Y-357572.2236,  
X-1206170.0912 Y-357566.7636,  
X-1206185.5073 Y-357538.8799,  
X-1206207.0030 Y-357500.0000,  
X-1206211.5228 Y-357491.8249,  
X-1206236.8504 Y-357443.2651,  
X-1206268.2160 Y-357383.1290,  
X-1206269.3906 Y-357380.3151,  
X-1206271.9760 Y-357374.1210,  
X-1206277.3990 Y-357364.5270,  
X-1206284.0720 Y-357351.8490,  
X-1206293.5250 Y-357333.8870,  
X-1206302.8100 Y-357319.9700,  
X-1206307.8100 Y-357311.2500,  
X-1206338.8128 Y-357258.5603,  
X-1206346.8270 Y-357244.9401,  
X-1206350.7027 Y-357238.3533,  
X-1206352.9700 Y-357234.5000,  
X-1206378.8000 Y-357189.9900,  
X-1206389.0288 Y-357172.1618,  
X-1206399.4469 Y-357144.9039,  
X-1206454.4249 Y-357065.5846,  
X-1206470.8613 Y-357041.8709,  
X-1206527.9476 Y-356959.5098,  
X-1206529.5365 Y-356956.8859,  
X-1206575.8054 Y-356895.1717,  
X-1206594.5842 Y-356845.6879,  
X-1206605.4740 Y-356816.9922,  
X-1206625.4888 Y-356769.4208,  
X-1206636.8727 Y-356742.3632,  
X-1206639.5903 Y-356726.9347,  
X-1206657.3810 Y-356625.9315,  
X-1206657.8798 Y-356619.7543,  
X-1206662.0769 Y-356567.7745,  
X-1206662.9994 Y-356556.3495,  
X-1206665.9569 Y-356519.7211,

X-1206664.9993 Y-356477.8444,  
X-1206664.8988 Y-356473.4522,  
X-1206663.6463 Y-356418.6766,  
X-1206663.5435 Y-356414.1818,  
X-1206663.4511 Y-356410.1393,  
X-1206662.9726 Y-356389.2170,  
X-1206662.8885 Y-356385.5358,  
X-1206662.2694 Y-356358.4626,  
X-1206662.7478 Y-356335.4601,  
X-1206664.3783 Y-356257.0577,  
X-1206664.8331 Y-356235.1883,  
X-1206664.9564 Y-356229.2634,  
X-1206679.1746 Y-356203.3348,  
X-1206689.3406 Y-356184.7961,  
X-1206696.6186 Y-356173.8726,  
X-1206706.0193 Y-356159.7630,  
X-1206719.8310 Y-356139.0330,  
X-1206732.4964 Y-356127.3204,  
X-1206736.2280 Y-356125.1242,  
X-1206754.5397 Y-356114.3470,  
X-1206764.6360 Y-356108.4048,  
X-1206794.7613 Y-356090.7877,  
X-1206798.1101 Y-356088.8293,  
X-1206806.7186 Y-356083.7952,  
X-1206809.6110 Y-356083.1460,  
X-1206819.3972 Y-356078.0051,  
X-1206870.7508 Y-356051.6552,  
X-1206874.0120 Y-356050.3331,  
X-1206864.5355 Y-356022.7431,  
X-1206860.8369 Y-356011.9749,  
X-1206840.7202 Y-355953.4073,  
X-1206828.5510 Y-355848.9555,  
X-1206825.5088 Y-355768.8420,  
X-1206838.6920 Y-355676.5594,  
X-1206851.1527 Y-355641.2811,  
X-1206890.7124 Y-355529.2807,  
X-1206909.1032 Y-355477.2133,  
X-1206916.7773 Y-355455.4866,  
X-1206860.3754 Y-355377.3121,  
X-1206840.0670 Y-355305.2174,  
X-1206876.6221 Y-355212.8145,  
X-1206902.0075 Y-355156.9665,  
X-1206918.2542 Y-355082.8410,  
X-1206961.0939 Y-355046.8557,  
X-1206967.8046 Y-355041.2187,  
X-1206994.4105 Y-355018.8698,  
X-1207001.5184 Y-355000.0000,  
X-1207011.9110 Y-354982.0294,  
X-1207020.9338 Y-354966.9323,  
X-1207027.7884 Y-354958.7506,  
X-1207032.2806 Y-354951.4417,  
X-1207042.9264 Y-354934.1208,  
X-1207043.9777 Y-354932.7200,  
X-1207044.5247 Y-354931.9911,  
X-1207045.4233 Y-354930.7938,  
X-1207047.8025 Y-354927.6237,  
X-1207054.3834 Y-354918.8551,  
X-1207007.6600 Y-354883.5000,  
X-1206994.6600 Y-354873.8100,  
X-1206928.7300 Y-354837.5500,  
X-1206924.0900 Y-354835.0000,  
X-1206922.6526 Y-354835.0000,  
X-1206907.4983 Y-354835.0000,



X-1206855.8400 Y-354835.0000,  
X-1206863.7000 Y-354825.4000,  
X-1206851.7900 Y-354819.2700,  
X-1206824.7600 Y-354828.2800,  
X-1206771.7600 Y-354835.1600,  
X-1206754.8000 Y-354819.2700,  
X-1206692.2600 Y-354804.4400,  
X-1206673.9600 Y-354782.9200,  
X-1206667.2600 Y-354781.4100,  
X-1206650.2800 Y-354778.2900,  
X-1206573.3900 Y-354759.3800,  
X-1206448.5270 Y-354759.8447,  
X-1206450.8398 Y-354753.4072,  
X-1206451.2877 Y-354752.1606,  
X-1206452.4625 Y-354748.8907,  
X-1206456.7623 Y-354738.6862,  
X-1206460.2332 Y-354730.4490,  
X-1206492.3507 Y-354695.5290,  
X-1206512.3782 Y-354673.7541,  
X-1206515.2229 Y-354670.6612,  
X-1206517.2302 Y-354667.5813,  
X-1206535.4650 Y-354639.6040,  
X-1206544.6540 Y-354609.9210,  
X-1206548.1083 Y-354604.2925,  
X-1206570.6490 Y-354567.5640,  
X-1206613.2772 Y-354487.4413,  
X-1206667.9031 Y-354422.9958,  
X-1206670.1396 Y-354420.0126,  
X-1206674.4844 Y-354373.6563,  
X-1206675.3490 Y-354364.4314,  
X-1206676.2691 Y-354340.0327,  
X-1206677.3331 Y-354311.8161,

X-1206679.1789 Y-354289.3873,  
X-1206679.7858 Y-354282.0118,  
X-1206681.2218 Y-354264.5613,  
X-1206686.9581 Y-354245.0797,  
X-1206688.1563 Y-354238.3227,  
X-1206692.7093 Y-354212.6476,  
X-1206698.6790 Y-354178.9840,  
X-1206700.1920 Y-354144.5590,  
X-1206697.1969 Y-354131.8184,  
X-1206694.3209 Y-354119.5840,  
X-1206692.2636 Y-354110.8325,  
X-1206691.6376 Y-354108.1698,  
X-1206676.2451 Y-354042.6919,  
X-1206673.6670 Y-354031.7250,  
X-1206668.8190 Y-353978.5200,  
X-1206668.8034 Y-353978.1028,  
X-1206667.6935 Y-353948.3299,  
X-1206667.0564 Y-353931.2397,  
X-1206667.0424 Y-353930.8646,  
X-1206665.7210 Y-353895.4200,  
X-1206708.6474 Y-353830.1313,  
X-1206722.8710 Y-353808.4980,  
X-1206744.2250 Y-353763.0090,  
X-1206794.6230 Y-353623.3460,  
X-1206831.4060 Y-353530.5120,  
X-1206840.3644 Y-353506.8214,  
X-1206842.4402 Y-353501.3317,  
X-1206843.0440 Y-353499.7350,  
X-1206842.2275 Y-353468.8782,  
X-1206848.5507 Y-353447.3336,  
X-1206851.1780 Y-353424.7385,  
X-1206847.1646 Y-353395.6824,

X-1206846.1876 Y-353392.4123,  
X-1206840.3511 Y-353366.9387,  
X-1206834.1915 Y-353346.7688,  
X-1206831.2335 Y-353337.0825,  
X-1206769.2053 Y-353283.3910,  
X-1206727.2748 Y-353254.1698,  
X-1206669.8035 Y-353178.8532,  
X-1206668.5308 Y-353177.1853,  
X-1206663.5198 Y-353167.9161,  
X-1206654.9740 Y-353152.1080,  
X-1206648.3351 Y-353116.3483,  
X-1206647.6110 Y-353113.0190,  
X-1206638.1710 Y-353093.6703,  
X-1206628.1831 Y-353073.1989,  
X-1206618.8325 Y-353054.0334,  
X-1206608.2636 Y-353002.0422,  
X-1206602.0088 Y-352971.2724,  
X-1206601.7496 Y-352969.9973,  
X-1206609.6160 Y-352940.6840,  
X-1206626.7726 Y-352876.7519,  
X-1206635.6047 Y-352843.8398,  
X-1206635.2183 Y-352833.3098,  
X-1206634.6778 Y-352818.5792,  
X-1206632.7786 Y-352812.4224,  
X-1206612.6692 Y-352747.8310,  
X-1206609.4495 Y-352737.4893,  
X-1206605.0874 Y-352723.8552,  
X-1206604.5240 Y-352722.0943,  
X-1206602.0026 Y-352711.8191,  
X-1206612.9500 Y-352697.7400,  
X-1206615.2900 Y-352674.1500,  
X-1207907.6100 Y-359711.0600,

### spoločná hranica lesný celok Čierny Váh ↔ lesný celok Svarínka, 311 bodov

X-1207901.0900 Y-359723.1200,  
X-1207853.0200 Y-359673.3500,  
X-1207830.6700 Y-359629.0200,  
X-1207793.4700 Y-359627.1500,  
X-1207733.3500 Y-359620.7800,  
X-1207629.4200 Y-359624.0800,  
X-1207618.6163 Y-359624.7018,  
X-1207615.3476 Y-359625.3374,  
X-1207566.8271 Y-359642.1484,  
X-1207565.5283 Y-359642.5984,  
X-1207535.8969 Y-359685.8443,  
X-1207518.7140 Y-359710.5254,  
X-1207474.2314 Y-359731.8932,  
X-1207466.5873 Y-359735.0783,  
X-1207426.1803 Y-359751.9145,  
X-1207396.6015 Y-359769.4731,  
X-1207392.9378 Y-359771.6479,  
X-1207388.7512 Y-359774.1332,  
X-1207381.6097 Y-359778.3726,  
X-1207373.7359 Y-359783.0466,  
X-1207366.7400 Y-359785.7500,  
X-1207360.9600 Y-359788.1300,  
X-1207356.4900 Y-359839.1000,  
X-1207354.6902 Y-359857.9680,  
X-1207352.0200 Y-359885.9600,  
X-1207347.2786 Y-359936.4424,  
X-1207346.8857 Y-359940.6248,  
X-1207346.5800 Y-359943.8800,  
X-1207343.4786 Y-359953.4016,

X-1207328.8900 Y-359998.1900,  
X-1207313.4575 Y-360046.0980,  
X-1207308.8400 Y-360060.4321,  
X-1207300.5501 Y-360122.6062,  
X-1207284.4146 Y-360150.5331,  
X-1207283.1892 Y-360170.1416,  
X-1207283.1735 Y-360170.3922,  
X-1207262.1426 Y-360212.7104,  
X-1207257.7290 Y-360221.5913,  
X-1207253.2448 Y-360253.9080,  
X-1207248.2709 Y-360289.7547,  
X-1207239.7316 Y-360351.2961,  
X-1207230.6675 Y-360366.1554,  
X-1207201.8753 Y-360413.3557,  
X-1207192.1168 Y-360427.3044,  
X-1207141.3087 Y-360477.0941,  
X-1207126.9117 Y-360486.2349,  
X-1207115.0843 Y-360493.7446,  
X-1207111.1076 Y-360495.7674,  
X-1207023.2973 Y-360530.9786,  
X-1207009.0468 Y-360538.3264,  
X-1206974.7568 Y-360570.3899,  
X-1206945.3651 Y-360590.4297,  
X-1206913.7470 Y-360593.7695,  
X-1206892.8167 Y-360603.1214,  
X-1206875.8943 Y-360624.9423,  
X-1206858.5265 Y-360626.7237,  
X-1206846.9481 Y-360621.6025,  
X-1206826.4631 Y-360606.4613,

X-1206799.6499 Y-360606.6947,  
X-1206787.3160 Y-360607.0669,  
X-1206774.4723 Y-360612.1730,  
X-1206700.5498 Y-360641.5617,  
X-1206665.0505 Y-360658.0933,  
X-1206657.3783 Y-360661.6661,  
X-1206615.4766 Y-360702.2980,  
X-1206583.7328 Y-360765.5741,  
X-1206526.1708 Y-360843.4521,  
X-1206478.3436 Y-360902.9185,  
X-1206469.0320 Y-360930.4299,  
X-1206427.7842 Y-360952.4432,  
X-1206391.6660 Y-360958.9785,  
X-1206331.6128 Y-360985.3095,  
X-1206296.5051 Y-360986.2334,  
X-1206183.7901 Y-361007.9448,  
X-1206155.1493 Y-361026.4227,  
X-1206147.3105 Y-361028.2317,  
X-1206131.1282 Y-361031.9661,  
X-1206078.4663 Y-361055.5252,  
X-1205988.8487 Y-361081.3942,  
X-1205911.8946 Y-361094.2660,  
X-1205846.7070 Y-361110.5741,  
X-1205833.5015 Y-361109.5840,  
X-1205832.0301 Y-361109.4736,  
X-1205793.4822 Y-361106.5836,  
X-1205789.6177 Y-361109.5506,  
X-1205750.7712 Y-361139.3746,  
X-1205722.9400 Y-361164.1748,

X-1205719.4353 Y-361168.4749,  
X-1205705.7232 Y-361185.2987,  
X-1205684.4939 Y-361206.2105,  
X-1205679.5710 Y-361211.0598,  
X-1205578.1775 Y-361243.4009,  
X-1205532.1659 Y-361267.0873,  
X-1205513.7097 Y-361276.5883,  
X-1205509.8453 Y-361278.5778,  
X-1205507.2333 Y-361279.9224,  
X-1205470.1879 Y-361298.9932,  
X-1205430.4580 Y-361319.4459,  
X-1205418.1817 Y-361329.4764,  
X-1205394.6207 Y-361348.7273,  
X-1205383.7823 Y-361360.3400,  
X-1205370.1465 Y-361374.9500,  
X-1205365.9542 Y-361384.9202,  
X-1205353.9269 Y-361413.5242,  
X-1205272.4169 Y-361399.5274,  
X-1205230.4770 Y-361386.2765,  
X-1205205.3150 Y-361378.3266,  
X-1205200.5475 Y-361380.7050,  
X-1205193.6982 Y-361384.1217,  
X-1205178.9932 Y-361391.4574,  
X-1205145.8905 Y-361410.4609,  
X-1205082.7498 Y-361457.9696,  
X-1205047.4777 Y-361482.1987,  
X-1205017.1572 Y-361503.0263,  
X-1204944.2083 Y-361552.0674,  
X-1204906.9607 Y-361588.1300,  
X-1204889.7881 Y-361604.7561,  
X-1204849.4171 Y-361635.1530,  
X-1204803.0251 Y-361717.8213,  
X-1204784.3283 Y-361758.9543,  
X-1204753.1670 Y-361785.1296,  
X-1204728.2380 Y-361798.8406,  
X-1204686.7539 Y-361816.0646,  
X-1204638.4198 Y-361826.2685,  
X-1204604.0490 Y-361836.7410,  
X-1204577.5793 Y-361856.6749,  
X-1204560.5481 Y-361869.5008,  
X-1204556.8255 Y-361871.0745,  
X-1204552.1989 Y-361873.0301,  
X-1204501.4732 Y-361894.4732,  
X-1204454.2134 Y-361901.9920,  
X-1204448.9722 Y-361903.7258,  
X-1204398.0758 Y-361920.5642,  
X-1204372.3196 Y-361926.3182,  
X-1204343.2754 Y-361934.8124,  
X-1204330.2737 Y-361942.6288,  
X-1204320.2594 Y-361948.6493,  
X-1204317.7934 Y-361994.1335,  
X-1204287.1051 Y-362016.3278,  
X-1204272.5829 Y-362028.7946,  
X-1204258.3349 Y-362051.2629,  
X-1204217.5088 Y-362128.6683,  
X-1204200.2468 Y-362185.2497,  
X-1204180.5133 Y-362222.6466,  
X-1204163.4748 Y-362254.9370,  
X-1204143.4265 Y-362261.3292,  
X-1204120.5962 Y-362268.6084,  
X-1204093.9375 Y-362277.1083,  
X-1204089.8995 Y-362278.3958,  
X-1203967.2740 Y-362305.0534,

X-1203872.8573 Y-362324.4025,  
X-1203781.5148 Y-362326.3412,  
X-1203747.7104 Y-362327.0585,  
X-1203725.5714 Y-362331.8715,  
X-1203709.0665 Y-362338.3395,  
X-1203694.2075 Y-362344.1627,  
X-1203654.3416 Y-362359.7859,  
X-1203582.1492 Y-362391.5505,  
X-1203573.4861 Y-362401.1762,  
X-1203551.5788 Y-362393.2779,  
X-1203498.8910 Y-362374.2822,  
X-1203478.0739 Y-362387.6648,  
X-1203464.4992 Y-362396.3914,  
X-1203420.2812 Y-362420.9568,  
X-1203403.3911 Y-362428.5129,  
X-1203389.1646 Y-362434.8774,  
X-1203334.3014 Y-362444.7036,  
X-1203317.1923 Y-362451.9274,  
X-1203297.4529 Y-362460.2618,  
X-1203281.5046 Y-362465.7897,  
X-1203258.2553 Y-362473.8482,  
X-1203254.8222 Y-362475.4551,  
X-1203234.0169 Y-362485.1938,  
X-1203225.4733 Y-362488.0817,  
X-1203223.6492 Y-362488.6983,  
X-1203197.4017 Y-362497.5707,  
X-1203169.1763 Y-362511.4595,  
X-1203164.9122 Y-362513.5576,  
X-1203120.5611 Y-362536.2488,  
X-1203105.4068 Y-362548.3836,  
X-1203101.9971 Y-362549.1799,  
X-1203079.8547 Y-362554.3518,  
X-1203074.0759 Y-362555.7017,  
X-1203060.3759 Y-362561.8231,  
X-1203049.5906 Y-362572.4625,  
X-1203033.2669 Y-362595.4906,  
X-1203024.2307 Y-362612.6888,  
X-1202987.7938 Y-362620.2677,  
X-1202963.0945 Y-362622.8025,  
X-1202929.6302 Y-362626.4841,  
X-1202897.1938 Y-362637.0040,  
X-1202852.4484 Y-362646.4695,  
X-1202851.0906 Y-362646.9956,  
X-1202811.2811 Y-362673.8238,  
X-1202765.6949 Y-362711.9585,  
X-1202734.9296 Y-362741.7303,  
X-1202719.1718 Y-362745.4304,  
X-1202710.4330 Y-362744.8412,  
X-1202705.0792 Y-362744.4805,  
X-1202685.4254 Y-362743.1558,  
X-1202665.5098 Y-362741.8133,  
X-1202621.9651 Y-362749.8239,  
X-1202576.0084 Y-362758.2781,  
X-1202500.7792 Y-362709.1813,  
X-1202498.4828 Y-362707.6825,  
X-1202495.7946 Y-362705.9283,  
X-1202488.9449 Y-362701.2407,  
X-1202483.1514 Y-362697.2759,  
X-1202480.2600 Y-362696.7469,  
X-1202443.7121 Y-362690.1886,  
X-1202439.3951 Y-362689.4140,  
X-1202422.3051 Y-362680.7350,  
X-1202358.1290 Y-362613.9480,

X-1202328.2489 Y-362589.0440,  
X-1202317.7901 Y-362578.9131,  
X-1202311.6926 Y-362575.2869,  
X-1202308.6070 Y-362573.4519,  
X-1202268.1992 Y-362540.0410,  
X-1202262.3618 Y-362535.2144,  
X-1202252.9510 Y-362527.4330,  
X-1202249.3667 Y-362528.2345,  
X-1202238.7459 Y-362530.6099,  
X-1202237.4768 Y-362531.0688,  
X-1202207.0789 Y-362542.0579,  
X-1202193.8811 Y-362546.8291,  
X-1202173.6191 Y-362549.0079,  
X-1202151.0560 Y-362551.4341,  
X-1202077.9751 Y-362572.4190,  
X-1202006.5869 Y-362559.5890,  
X-1201969.9881 Y-362568.1519,  
X-1201940.7600 Y-362571.5510,  
X-1201903.5969 Y-362567.0721,  
X-1201813.8851 Y-362550.4850,  
X-1201741.5789 Y-362540.8081,  
X-1201664.0089 Y-362540.2301,  
X-1201611.0540 Y-362542.1890,  
X-1201604.8940 Y-362541.7982,  
X-1201570.0083 Y-362539.5851,  
X-1201565.0028 Y-362539.2676,  
X-1201559.4164 Y-362537.2329,  
X-1201507.7783 Y-362518.0472,  
X-1201453.5300 Y-362523.6700,  
X-1201435.9900 Y-362525.4100,  
X-1201336.6400 Y-362534.6800,  
X-1201325.9400 Y-362576.7800,  
X-1201316.3900 Y-362665.8200,  
X-1201345.1846 Y-362735.6454,  
X-1201345.5700 Y-362736.5800,  
X-1201368.7500 Y-362768.7800,  
X-1201412.2500 Y-362828.2400,  
X-1201431.3400 Y-362849.5600,  
X-1201432.0401 Y-362851.0259,  
X-1201437.8400 Y-362863.1700,  
X-1201454.8300 Y-362911.7200,  
X-1201459.1100 Y-362922.6300,  
X-1201462.2300 Y-362935.0900,  
X-1201465.6000 Y-362944.7600,  
X-1201475.2200 Y-362970.9200,  
X-1201470.4100 Y-362979.2800,  
X-1201464.9900 Y-362984.9700,  
X-1201447.0100 Y-362998.9400,  
X-1201436.0200 Y-363012.4400,  
X-1201423.5500 Y-363007.1900,  
X-1201417.7700 Y-363013.9500,  
X-1201409.4900 Y-363030.0600,  
X-1201400.6100 Y-363041.9300,  
X-1201397.4000 Y-363053.5900,  
X-1201382.4500 Y-363070.3700,  
X-1201378.3600 Y-363086.7400,  
X-1201366.0900 Y-363101.4900,  
X-1201354.6000 Y-363118.5700,  
X-1201352.9100 Y-363127.0100,  
X-1201357.3978 Y-363144.3280,  
X-1201357.8000 Y-363145.8800,  
X-1201377.1043 Y-363168.5925,  
X-1201384.6449 Y-363177.4643,

X-1201387.6500 Y-363181.0000,  
X-1201394.7910 Y-363188.1651,  
X-1201414.3600 Y-363207.8000,  
X-1201423.0600 Y-363223.0100,  
X-1201433.6600 Y-363243.8200,  
X-1201431.6800 Y-363257.8800,  
X-1201430.7200 Y-363278.8700,  
X-1201450.1600 Y-363317.1900,  
X-1201476.7800 Y-363361.0300,  
X-1201483.7000 Y-363384.6400,  
X-1201482.0200 Y-363424.1300,  
X-1201485.6900 Y-363434.7200,

X-1201496.3600 Y-363454.1000,  
X-1201510.2100 Y-363475.0800,  
X-1201537.3000 Y-363510.7700,  
X-1201578.6700 Y-363545.0100,  
X-1201603.0300 Y-363562.1400,  
X-1201644.9600 Y-363613.4300,  
X-1201646.8400 Y-363651.6200,  
X-1201631.2100 Y-363701.3900,  
X-1201607.9500 Y-363727.0100,  
X-1201593.4799 Y-363743.3356,  
X-1201587.8300 Y-363749.7100,  
X-1201566.9300 Y-363748.3000,

X-1201553.4900 Y-363747.5400,  
X-1201543.8600 Y-363746.8800,  
X-1201526.7800 Y-363743.7200,  
X-1201512.2200 Y-363730.0900,  
X-1201490.2300 Y-363729.2900,  
X-1201478.7000 Y-363722.0000,  
X-1201452.4300 Y-363744.1000,  
X-1201446.4400 Y-363746.6900,  
X-1201390.5100 Y-363758.3700,  
X-1207907.6100 Y-359711.0600,  
X-1201276.4100 Y-363800.0100,

### spoločná hranica lesný celok Čierny Váh ↔ lesný celok Kráľova Lehota, 521 bodov

X-1201268.0300 Y-363761.8200,  
X-1201265.9500 Y-363745.9400,  
X-1201258.4900 Y-363744.2500,  
X-1201263.3800 Y-363731.6000,  
X-1201259.9500 Y-363724.1500,  
X-1201262.0400 Y-363718.3300,  
X-1201260.8700 Y-363711.9200,  
X-1201252.5700 Y-363700.9400,  
X-1201251.7400 Y-363695.8900,  
X-1201249.4600 Y-363691.2000,  
X-1201255.2100 Y-363687.4800,  
X-1201251.6400 Y-363680.3400,  
X-1201254.4600 Y-363676.2600,  
X-1201249.2500 Y-363665.4900,  
X-1201246.9500 Y-363654.1200,  
X-1201237.4600 Y-363636.0000,  
X-1201239.1800 Y-363624.7400,  
X-1201243.4600 Y-363617.8100,  
X-1201238.9100 Y-363617.1800,  
X-1201232.6400 Y-363582.8300,  
X-1201225.4700 Y-363566.4200,  
X-1201225.0800 Y-363565.5300,  
X-1201222.8000 Y-363556.2200,  
X-1201219.6600 Y-363550.6500,  
X-1201222.6900 Y-363545.9400,  
X-1201222.7700 Y-363545.8100,  
X-1201221.9300 Y-363531.2400,  
X-1201220.3500 Y-363528.6900,  
X-1201218.3700 Y-363525.5200,  
X-1201219.4400 Y-363521.9500,  
X-1201221.1600 Y-363516.1600,  
X-1201216.6300 Y-363501.3000,  
X-1201211.8000 Y-363485.4700,  
X-1201213.8800 Y-363480.9900,  
X-1201215.4300 Y-363477.6500,  
X-1201214.0100 Y-363473.0200,  
X-1201216.0400 Y-363465.7500,  
X-1201216.7800 Y-363454.7300,  
X-1201211.2000 Y-363449.1800,  
X-1201208.2300 Y-363440.2800,  
X-1201213.1100 Y-363431.5700,  
X-1201204.0800 Y-363427.3200,  
X-1201202.7000 Y-363423.6800,  
X-1201194.2000 Y-363421.1600,  
X-1201201.4000 Y-363407.9200,  
X-1201191.6400 Y-363399.1600,  
X-1201190.5400 Y-363395.5700,  
X-1201188.1300 Y-363391.0000,  
X-1201193.5900 Y-363383.2700,

X-1201189.4300 Y-363369.2900,  
X-1201181.7900 Y-363364.5700,  
X-1201178.9000 Y-363359.4800,  
X-1201170.5500 Y-363353.8900,  
X-1201167.3000 Y-363352.7800,  
X-1201162.2800 Y-363347.5600,  
X-1201165.6400 Y-363338.7100,  
X-1201161.9900 Y-363325.3200,  
X-1201153.8500 Y-363314.5600,  
X-1201152.6800 Y-363309.3100,  
X-1201147.2300 Y-363304.0300,  
X-1201146.4300 Y-363295.0600,  
X-1201138.4500 Y-363286.0500,  
X-1201139.9800 Y-363278.8600,  
X-1201135.2000 Y-363274.7000,  
X-1201135.3300 Y-363269.4600,  
X-1201129.8100 Y-363267.3600,  
X-1201119.4200 Y-363264.7800,  
X-1201117.2200 Y-363264.2400,  
X-1201116.8400 Y-363257.0000,  
X-1201116.7800 Y-363255.8900,  
X-1201124.1200 Y-363251.3900,  
X-1201125.9600 Y-363235.1700,  
X-1201123.9300 Y-363227.1000,  
X-1201122.8700 Y-363223.9200,  
X-1201122.2900 Y-363215.7900,  
X-1201119.6700 Y-363209.5000,  
X-1201115.0600 Y-363206.5100,  
X-1201109.7700 Y-363196.0200,  
X-1201112.7500 Y-363192.5300,  
X-1201109.9400 Y-363186.0300,  
X-1201108.5900 Y-363171.6300,  
X-1201101.4500 Y-363172.6000,  
X-1201100.2000 Y-363165.4900,  
X-1201095.1900 Y-363163.1100,  
X-1201093.2800 Y-363161.6000,  
X-1201087.0900 Y-363151.8900,  
X-1201091.5300 Y-363151.7600,  
X-1201094.5200 Y-363148.6200,  
X-1201089.7100 Y-363132.4200,  
X-1201086.8500 Y-363127.0200,  
X-1201083.2300 Y-363125.1200,  
X-1201077.1800 Y-363114.6600,  
X-1201080.0800 Y-363114.6700,  
X-1201073.3000 Y-363103.4900,  
X-1201072.0000 Y-363096.6100,  
X-1201065.6200 Y-363093.5800,  
X-1201052.2100 Y-363067.5100,  
X-1201039.9400 Y-363054.0600,

X-1201032.2400 Y-363042.0800,  
X-1201020.9200 Y-363034.7900,  
X-1201007.0500 Y-363020.0900,  
X-1200965.5900 Y-362972.7700,  
X-1200961.5800 Y-362971.5000,  
X-1200953.8800 Y-362969.0500,  
X-1200950.9200 Y-362962.6500,  
X-1200950.6500 Y-362960.9900,  
X-1200949.6900 Y-362955.1300,  
X-1200946.5300 Y-362953.3300,  
X-1200942.8600 Y-362951.8700,  
X-1200941.3200 Y-362951.2500,  
X-1200931.6800 Y-362937.4500,  
X-1200923.5500 Y-362925.8200,  
X-1200913.1200 Y-362922.4100,  
X-1200912.0200 Y-362922.0500,  
X-1200909.2200 Y-362919.2500,  
X-1200904.8800 Y-362914.9000,  
X-1200903.4600 Y-362914.5800,  
X-1200894.3800 Y-362912.5400,  
X-1200888.9700 Y-362905.3700,  
X-1200888.4400 Y-362902.4000,  
X-1200887.7300 Y-362898.4700,  
X-1200879.1300 Y-362894.6900,  
X-1200873.9100 Y-362877.1000,  
X-1200871.2700 Y-362878.3800,  
X-1200866.5600 Y-362876.2600,  
X-1200859.9500 Y-362868.7700,  
X-1200854.7300 Y-362856.1700,  
X-1200842.2000 Y-362844.7800,  
X-1200836.5200 Y-362842.9900,  
X-1200830.1500 Y-362833.7600,  
X-1200831.0900 Y-362825.8800,  
X-1200806.5500 Y-362802.2000,  
X-1200787.4600 Y-362794.3200,  
X-1200759.2500 Y-362769.0000,  
X-1200756.3200 Y-362759.8800,  
X-1200747.8700 Y-362750.9200,  
X-1200740.1800 Y-362747.3800,  
X-1200738.9500 Y-362742.1200,  
X-1200734.3500 Y-362737.1100,  
X-1200729.3900 Y-362736.8500,  
X-1200725.5300 Y-362734.2400,  
X-1200721.0900 Y-362731.2400,  
X-1200714.2900 Y-362729.6800,  
X-1200716.3100 Y-362725.9500,  
X-1200710.8500 Y-362724.1800,  
X-1200698.5800 Y-362723.3100,  
X-1200684.7500 Y-362716.9900,

X-1200680.1800 Y-362718.4700,  
X-1200677.9400 Y-362718.4700,  
X-1200664.5000 Y-362718.4400,  
X-1200647.2600 Y-362718.4000,  
X-1200644.1200 Y-362723.2100,  
X-1200614.9200 Y-362734.1000,  
X-1200611.1700 Y-362736.2200,  
X-1200607.3600 Y-362738.3700,  
X-1200600.9900 Y-362740.5600,  
X-1200559.8800 Y-362754.7200,  
X-1200538.8500 Y-362763.2600,  
X-1200530.3600 Y-362763.6700,  
X-1200522.1200 Y-362764.0600,  
X-1200517.2000 Y-362764.3000,  
X-1200513.3500 Y-362760.1400,  
X-1200479.9800 Y-362724.0600,  
X-1200460.2200 Y-362711.5200,  
X-1200439.2300 Y-362700.7800,  
X-1200394.6700 Y-362680.6900,  
X-1200372.7000 Y-362668.2800,  
X-1200370.0700 Y-362668.6100,  
X-1200365.9200 Y-362669.1300,  
X-1200357.2600 Y-362660.8000,  
X-1200356.3600 Y-362659.9400,  
X-1200355.2800 Y-362653.1600,  
X-1200354.6500 Y-362651.3600,  
X-1200352.4400 Y-362645.0300,  
X-1200334.9500 Y-362630.4300,  
X-1200332.4900 Y-362629.3200,  
X-1200330.2600 Y-362622.8400,  
X-1200330.1900 Y-362622.6200,  
X-1200330.0300 Y-362622.6600,  
X-1200322.3800 Y-362624.4100,  
X-1200320.0500 Y-362619.8900,  
X-1200307.4100 Y-362618.1800,  
X-1200290.3800 Y-362609.6700,  
X-1200284.9200 Y-362606.9500,  
X-1200284.4100 Y-362605.6900,  
X-1200281.6700 Y-362599.0200,  
X-1200277.0200 Y-362597.6000,  
X-1200271.5600 Y-362587.8500,  
X-1200265.7300 Y-362588.7400,  
X-1200254.9500 Y-362580.8000,  
X-1200247.7600 Y-362580.0800,  
X-1200245.2900 Y-362575.7200,  
X-1200239.8200 Y-362575.9700,  
X-1200237.9300 Y-362576.0600,  
X-1200236.8100 Y-362573.9700,  
X-1200224.4300 Y-362550.8000,  
X-1200228.3800 Y-362540.1500,  
X-1200233.1900 Y-362527.1900,  
X-1200230.9700 Y-362519.4000,  
X-1200218.1200 Y-362504.2800,  
X-1200218.9100 Y-362462.1800,  
X-1200219.0200 Y-362456.3400,  
X-1200221.6000 Y-362413.8300,  
X-1200225.7800 Y-362384.1700,  
X-1200227.3700 Y-362326.4500,  
X-1200232.2800 Y-362304.9000,  
X-1200232.5500 Y-362287.8500,  
X-1200235.5200 Y-362263.4900,  
X-1200235.0300 Y-362241.4800,  
X-1200240.1200 Y-362193.1700,

X-1200251.1800 Y-362177.2800,  
X-1200265.6300 Y-362164.4000,  
X-1200273.0300 Y-362154.9600,  
X-1200271.4000 Y-362137.8000,  
X-1200255.8300 Y-362105.1100,  
X-1200253.0900 Y-362094.8000,  
X-1200258.2800 Y-362055.3700,  
X-1200259.7800 Y-362044.0000,  
X-1200261.5500 Y-362017.3900,  
X-1200261.3600 Y-361993.5300,  
X-1200248.6000 Y-361952.4900,  
X-1200236.3300 Y-361927.8700,  
X-1200227.5500 Y-361907.0500,  
X-1200223.4600 Y-361893.6800,  
X-1200218.3200 Y-361880.5200,  
X-1200212.1300 Y-361871.1100,  
X-1200190.8500 Y-361858.7700,  
X-1200176.8100 Y-361850.2500,  
X-1200169.3700 Y-361841.6300,  
X-1200161.6800 Y-361829.8200,  
X-1200150.2100 Y-361806.9400,  
X-1200143.3200 Y-361794.0200,  
X-1200118.8000 Y-361762.3200,  
X-1200096.4400 Y-361732.4300,  
X-1200083.7600 Y-361707.6500,  
X-1200067.4900 Y-361679.4700,  
X-1200058.1000 Y-361671.0000,  
X-1200030.1200 Y-361658.2000,  
X-1200010.3900 Y-361645.1600,  
X-1199985.9300 Y-361629.2000,  
X-1199962.9300 Y-361605.8100,  
X-1199945.3300 Y-361583.0100,  
X-1199918.9300 Y-361550.6100,  
X-1199903.1300 Y-361536.4200,  
X-1199878.6300 Y-361517.4200,  
X-1199852.3300 Y-361500.4200,  
X-1199817.5300 Y-361486.3200,  
X-1199800.2300 Y-361477.6200,  
X-1199774.8300 Y-361467.4200,  
X-1199740.5400 Y-361459.6200,  
X-1199724.7400 Y-361455.4300,  
X-1199715.4400 Y-361452.9300,  
X-1199681.4100 Y-361445.1900,  
X-1199617.8400 Y-361403.8500,  
X-1199615.7800 Y-361405.0300,  
X-1199613.5300 Y-361406.3300,  
X-1199609.8400 Y-361400.7500,  
X-1199610.6100 Y-361399.0000,  
X-1199598.8300 Y-361389.2300,  
X-1199598.2200 Y-361388.2600,  
X-1199582.4900 Y-361374.6300,  
X-1199572.6600 Y-361366.1200,  
X-1199541.2000 Y-361338.8600,  
X-1199542.7000 Y-361337.7000,  
X-1199539.4700 Y-361333.3900,  
X-1199536.1200 Y-361334.7900,  
X-1199537.9100 Y-361308.8700,  
X-1199542.2500 Y-361303.9000,  
X-1199535.1500 Y-361305.2400,  
X-1199506.1800 Y-361321.3200,  
X-1199492.9500 Y-361398.1500,  
X-1199493.9700 Y-361447.3200,  
X-1199472.1100 Y-361479.8800,

X-1199378.2100 Y-361533.2800,  
X-1199351.8900 Y-361544.4900,  
X-1199320.5800 Y-361591.0500,  
X-1199274.3400 Y-361602.8200,  
X-1199214.3900 Y-361589.3500,  
X-1199153.5200 Y-361547.0100,  
X-1199115.0700 Y-361517.4400,  
X-1199105.2400 Y-361390.1700,  
X-1199048.4500 Y-361421.3100,  
X-1198972.8500 Y-361473.3300,  
X-1198942.3300 Y-361502.2700,  
X-1198895.9400 Y-361522.8700,  
X-1198832.3100 Y-361540.3600,  
X-1198773.8000 Y-361513.5500,  
X-1198741.9800 Y-361477.0200,  
X-1198691.2100 Y-361408.6400,  
X-1198675.3700 Y-361400.8800,  
X-1198637.0900 Y-361402.3700,  
X-1198471.2800 Y-361388.9300,  
X-1198359.1700 Y-361375.3300,  
X-1198355.5700 Y-361375.5300,  
X-1198278.2600 Y-361370.7200,  
X-1198231.1800 Y-361355.9600,  
X-1198180.7900 Y-361401.4500,  
X-1198171.1100 Y-361410.5500,  
X-1198149.2000 Y-361424.3000,  
X-1198086.0000 Y-361447.0600,  
X-1198082.6200 Y-361448.2200,  
X-1198075.6600 Y-361450.6000,  
X-1198074.2100 Y-361451.1000,  
X-1198071.6500 Y-361451.9800,  
X-1198065.3000 Y-361454.1500,  
X-1198057.1700 Y-361456.3600,  
X-1198056.2100 Y-361456.5500,  
X-1198016.5600 Y-361464.5100,  
X-1197931.1100 Y-361481.6600,  
X-1197948.9000 Y-361546.2000,  
X-1197948.3600 Y-361587.9500,  
X-1197950.1400 Y-361622.3500,  
X-1197951.7800 Y-361652.5900,  
X-1197966.9300 Y-361700.4100,  
X-1197979.3100 Y-361737.8500,  
X-1197987.7500 Y-361780.1800,  
X-1197945.9700 Y-361806.0900,  
X-1197942.6600 Y-361807.7700,  
X-1197938.1400 Y-361811.3500,  
X-1197930.9100 Y-361816.6100,  
X-1197912.8600 Y-361800.3700,  
X-1197895.6800 Y-361784.2200,  
X-1197880.8200 Y-361768.7100,  
X-1197862.2300 Y-361744.1100,  
X-1197851.5100 Y-361732.4500,  
X-1197845.7800 Y-361726.3400,  
X-1197843.4300 Y-361720.6400,  
X-1197834.3800 Y-361701.7700,  
X-1197831.6600 Y-361696.1300,  
X-1197812.9400 Y-361676.0100,  
X-1197797.5400 Y-361659.8600,  
X-1197770.1700 Y-361636.4000,  
X-1197760.1300 Y-361611.7900,  
X-1197730.8000 Y-361543.2000,  
X-1197724.9200 Y-361539.2200,  
X-1197708.5600 Y-361492.5100,

X-1197695.0100 Y-361418.5100,  
X-1197687.0600 Y-361364.9000,  
X-1197697.4900 Y-361305.4200,  
X-1197743.0100 Y-361218.0000,  
X-1197758.9000 Y-361198.2700,  
X-1197766.5200 Y-361178.9800,  
X-1197779.3000 Y-361163.0200,  
X-1197793.3200 Y-361154.3700,  
X-1197800.4300 Y-361151.2300,  
X-1197814.0900 Y-361142.4000,  
X-1197820.9100 Y-361141.3600,  
X-1197837.1400 Y-361139.8900,  
X-1197848.3000 Y-361138.8800,  
X-1197851.1900 Y-361138.6200,  
X-1197864.0300 Y-361130.6900,  
X-1197884.2700 Y-361109.8400,  
X-1197889.6900 Y-361070.4600,  
X-1197890.8400 Y-361061.9800,  
X-1197893.4400 Y-361030.3500,  
X-1197888.5300 Y-361004.2000,  
X-1197880.5900 Y-360973.2900,  
X-1197875.5700 Y-360947.7900,  
X-1197867.5900 Y-360926.7000,  
X-1197831.1000 Y-360892.2000,  
X-1197818.9900 Y-360869.1500,  
X-1197788.9700 Y-360793.1000,  
X-1197792.3000 Y-360763.2000,  
X-1197816.0700 Y-360727.7500,  
X-1197832.8300 Y-360697.5600,  
X-1197832.2600 Y-360632.7900,  
X-1197823.5900 Y-360610.1100,  
X-1197810.8448 Y-360590.0013,  
X-1197792.1400 Y-360560.4900,  
X-1197771.4800 Y-360516.5800,  
X-1197761.8100 Y-360482.2500,  
X-1197762.5300 Y-360467.3700,  
X-1197776.3700 Y-360404.0700,  
X-1197796.7500 Y-360325.9200,  
X-1197802.3300 Y-360286.5900,  
X-1197818.3800 Y-360239.6600,  
X-1197821.1200 Y-360208.6900,  
X-1197803.5200 Y-360118.7500,  
X-1197792.9200 Y-360105.6600,  
X-1197773.7500 Y-360062.8500,  
X-1197768.3200 Y-360047.6100,  
X-1197747.3800 Y-359983.9400,  
X-1197743.9300 Y-359962.9000,  
X-1197732.8100 Y-359927.3900,  
X-1197727.2200 Y-359877.2200,  
X-1197735.1300 Y-359852.5900,  
X-1197743.3200 Y-359820.7200,  
X-1197750.3400 Y-359792.8000,  
X-1197758.4100 Y-359763.0600,  
X-1197764.5000 Y-359736.4500,  
X-1197768.8500 Y-359713.3100,  
X-1197764.6500 Y-359685.9400,  
X-1197756.4500 Y-359663.8000,  
X-1197742.0900 Y-359621.6700,  
X-1197722.8100 Y-359565.9400,  
X-1197706.6200 Y-359524.5600,  
X-1197702.4100 Y-359513.8100,  
X-1197693.3300 Y-359490.6100,

X-1197682.6600 Y-359463.3300,  
X-1197669.0700 Y-359428.6100,  
X-1197642.8000 Y-359428.4700,  
X-1197611.7700 Y-359435.9800,  
X-1197587.2400 Y-359447.6600,  
X-1197568.9300 Y-359452.1300,  
X-1197509.4300 Y-359439.5800,  
X-1197468.2100 Y-359434.2400,  
X-1197414.2300 Y-359453.3000,  
X-1197388.9600 Y-359431.3600,  
X-1197358.3700 Y-359415.2000,  
X-1197325.0800 Y-359375.8800,  
X-1197323.1900 Y-359328.6000,  
X-1197323.0800 Y-359297.2200,  
X-1197327.3900 Y-359280.3300,  
X-1197328.8300 Y-359276.4300,  
X-1197329.2300 Y-359275.3400,  
X-1197328.8400 Y-359272.4300,  
X-1197328.4000 Y-359269.1900,  
X-1197327.4000 Y-359223.2300,  
X-1197310.3000 Y-359155.8400,  
X-1197283.5800 Y-359058.4400,  
X-1197258.8500 Y-358967.2200,  
X-1197236.2900 Y-358878.9700,  
X-1197227.5000 Y-358844.6300,  
X-1197214.9000 Y-358798.2200,  
X-1197211.5800 Y-358687.6800,  
X-1197205.5900 Y-358552.8900,  
X-1197206.1800 Y-358527.8600,  
X-1197206.5600 Y-358524.5900,  
X-1197201.2100 Y-358513.8600,  
X-1197194.7800 Y-358500.6100,  
X-1197184.8100 Y-358477.3200,  
X-1197169.7600 Y-358448.4100,  
X-1197164.5800 Y-358437.7200,  
X-1197158.3400 Y-358430.8000,  
X-1197151.9900 Y-358423.6000,  
X-1197145.2000 Y-358410.4200,  
X-1197132.4300 Y-358399.5900,  
X-1197115.3700 Y-358371.7400,  
X-1197106.8100 Y-358363.4600,  
X-1197091.0500 Y-358337.6300,  
X-1197073.3500 Y-358299.8100,  
X-1197048.0500 Y-358294.5400,  
X-1197024.9900 Y-358293.9800,  
X-1197013.3600 Y-358291.1800,  
X-1196993.7500 Y-358290.7300,  
X-1196965.7800 Y-358283.8700,  
X-1196948.9200 Y-358281.4500,  
X-1196946.0100 Y-358280.7200,  
X-1196933.4500 Y-358274.9900,  
X-1196927.4400 Y-358265.3300,  
X-1196928.1500 Y-358233.7300,  
X-1196936.7100 Y-358218.8300,  
X-1196947.2900 Y-358194.1300,  
X-1196945.2200 Y-358173.5800,  
X-1196937.5900 Y-358149.4300,  
X-1196917.4200 Y-358139.9100,  
X-1196892.2800 Y-358128.1600,  
X-1196877.7300 Y-358117.3000,  
X-1196864.9600 Y-358082.5400,  
X-1196864.0300 Y-358057.3600,

X-1196865.4000 Y-358043.3200,  
X-1196866.4900 Y-358035.5600,  
X-1196873.1800 Y-358014.1000,  
X-1196889.6000 Y-357965.7900,  
X-1196890.8400 Y-357962.9800,  
X-1196910.2100 Y-357931.1000,  
X-1196917.3000 Y-357931.0000,  
X-1196930.1600 Y-357918.4400,  
X-1196948.7000 Y-357892.0500,  
X-1196964.5600 Y-357867.5400,  
X-1196975.0200 Y-357834.0700,  
X-1196999.6600 Y-357753.1800,  
X-1197007.3400 Y-357729.8000,  
X-1197005.9800 Y-357707.1900,  
X-1197007.7300 Y-357697.0100,  
X-1197007.9500 Y-357690.9900,  
X-1197016.3900 Y-357650.4100,  
X-1197013.8900 Y-357625.3700,  
X-1197011.6200 Y-357611.5600,  
X-1197008.0900 Y-357611.0000,  
X-1196967.7900 Y-357602.7300,  
X-1196889.5200 Y-357586.6100,  
X-1196814.5800 Y-357570.7900,  
X-1196764.0300 Y-357560.7300,  
X-1196739.4900 Y-357555.3200,  
X-1196685.6300 Y-357544.2200,  
X-1196666.1200 Y-357540.2500,  
X-1196664.5400 Y-357540.4600,  
X-1196664.4100 Y-357539.8100,  
X-1196656.2600 Y-357532.2600,  
X-1196629.8800 Y-357510.6600,  
X-1196587.4300 Y-357475.4000,  
X-1196556.5100 Y-357449.3500,  
X-1196523.2600 Y-357421.6100,  
X-1196512.1200 Y-357411.9700,  
X-1196461.7700 Y-357388.5400,  
X-1196406.5300 Y-357362.6200,  
X-1196356.5500 Y-357338.8400,  
X-1196329.7600 Y-357325.9200,  
X-1196321.2700 Y-357326.2200,  
X-1196321.5300 Y-357321.9400,  
X-1196282.5400 Y-357303.7000,  
X-1196262.1400 Y-357294.1000,  
X-1196254.2300 Y-357290.1500,  
X-1196252.1200 Y-357289.0100,  
X-1196252.5700 Y-357283.4600,  
X-1196235.6600 Y-357275.6600,  
X-1196181.7800 Y-357250.4600,  
X-1196181.1200 Y-357255.5100,  
X-1196156.4200 Y-357243.8100,  
X-1196153.0300 Y-357242.2000,  
X-1196136.3400 Y-357234.1800,  
X-1196111.1100 Y-357221.9900,  
X-1196089.7700 Y-357211.6100,  
X-1196055.6100 Y-357195.1100,  
X-1196027.9600 Y-357181.5900,  
X-1195988.9100 Y-357162.8700,  
X-1195955.0200 Y-357146.2800,  
X-1195947.8000 Y-357142.6500,  
X-1195935.2362 Y-357136.9508,  
X-1201276.4100 Y-363800.0100,